



DS SERIES **GUIDE**

Latest edition

Proudly designed, engineered and
manufactured in SPAIN



CULTURE OF SOUND

OUR TECHNOLOGY

These are the technological features of our cabinets that you will find on each product card:



DIGITAL PROCESSING

Latest generation 24bit/96Khz digital processor which optimizes the system components.

It includes 2 channel processing electronics with functions for phase correction, driver protection, gain control, equalization, classic crossover and linear phase filtering.



FIR POWERED

In-house engineered FIR filter algorithms allow Lynx systems to deliver outstanding sound quality and phase compatibility within all the DSP powered product range whilst maintaining very low latency.



AES / EBU

For self-powered Lynx Pro Audio cabinets that have this option, enabling digital audio input signal via AES / EBU protocol, accepting signals up to 24 bits and 192 kHz whilst with the software being able to choose if you want to use the input L, R or L + R.



POWER FACTOR CORRECTION

PFC is a measure of how efficiently the load current is being converted into a more useful output current. With PFC the power supply regulates itself when AC mains change, so the amp power output will not change with mains swinging.

This system is also very environmentally friendly with a reduction of approximately 40% of current draw. It transforms the power consumed in to "useful power" producing less hum and distortion.



NEODYMIUM

Lynx Pro Audio cabinets that use neodymium magnet group components benefit from special characteristics such as improved driver performance and of course the saving in overall system weight.



ATMOSPHERIC

Air absorption compensation is an algorithm that compensates for the loss of pressure caused by weather conditions and the distance to the listener's ear from the sound system.

By introducing three parameters (temperature, relative humidity and distance) the algorithm calculates the losses and compensates for this loss so they are not apparent in the listening zone.



DIGITAL INCLINOMETER

Automatic function to calculate cabinet splay angles. The inclinometer data can be viewed and controlled from the cabinet LCD display either manually or automatically.

The inclinometer automatically communicates with the DSP and modifies the equalization algorithms. According to the splay angle of the inclinometer the DSP compensates for atmospheric loss.

The result is a more efficient performance and a flat response, even at long distances.



IMPORT DATA

This feature of our control software allows us to add the electro-acoustic response of the system we want to adjust to our processing chain, enabling us to see the total system response and not just the electrical one.



FLOAT POINT OPERATIONS IN DOUBLE PRECISION

The DSP processing works with double precision, achieving an internal resolution of 56 bits or 64 bits, one of the largest resolutions available on the market today.

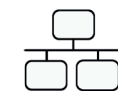
This enables the use of high precision filters with extremely low distortion delivering unbeatable sound clarity and quality.



AMPLIFICATION

The Class D amplifier is characterized by high efficiency (low loss of energy), which results in smaller heat sinks and much smaller total power consumed by reducing the weight and size of the amplifier.

Class D amplifiers achieve about 80% higher efficiency than other amplifiers, whose efficiency is approximately 45%. There are significant advantages, the lower dissipation produces less heat and saves circuit board space.



ETHERNET

This option enables you to connect various devices in a standard Ethernet network and control them remotely through our OCS 'Online Control Software'.



ONLINE CONTROL SYSTEM

OCS is a software to control each cabinet in real time (via Ethernet or pc). It obtains detailed information of the cabinet behaviour: RMS levels, Input clip, compression levels, power module temperature, air absorption compensation and cabinet angulation.



CABINET UPDATER

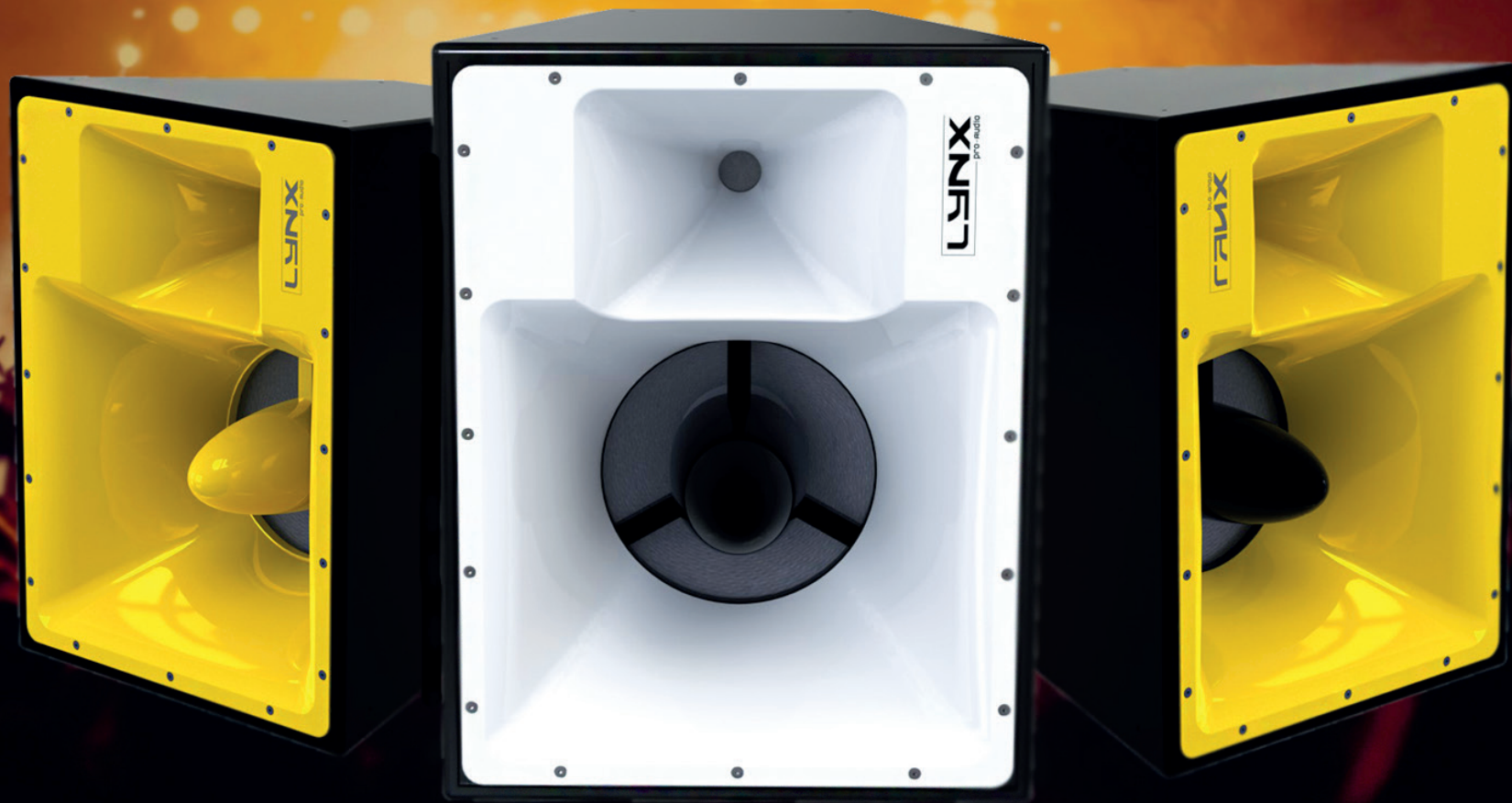
This software enables you to update your cabinets with the latest presets and firmware. Enclosures are connected via Internet to our servers and automatically detects any updates that might have been made for them. This ensures the end user always has all the improvements developed by our R & D department available for their system.



RAINBOW 3D

Based on polar response measurements, taken meticulously with a 360° sphere in a 3D environment.

The Rainbow 3D software calculates the response from multiple sound sources in a 3D space. In addition, the user can optimize the response using our FIR filtering technology.



DS Series

The DS series offer a full range horn loaded cabinet and a extremely high power sub-bass enclosure, both specifically designed for club and discotheque installs.

Manufactured as standard with premium birch plywood and finished with high-resistant water based black paint it can also be manufactured in any colour or finish to compliment any install design.

The DS cabinets are designed to not only be pleasing to the eye but also to the ear.

They have the special feature that can be made in any colour that you need.

DS-12



- Colour and finishing options
- High performance
- Two way system
- Self powered version optional

Available in any colour and finish you like, the DS-12 is designed to not only be pleasing to the eye but also to the ear.

The horn loaded, high power DS-12 is primarily designed for installations, especially clubs/discos, is bi-amplified and can also be manufactured as a self-powered version to deliver all the features such as FIR that Lynx Pro audio electronics deliver.

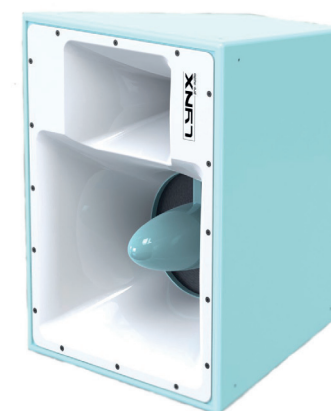
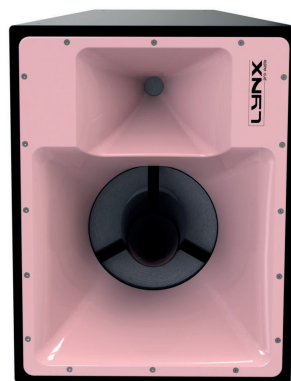


Technical Data

DS-12

Components	LF/MF 1x12" + 1.4" titanium diaphragm HF driver
Frequency Range	130 Hz – 20 KHz
Frequency Response	150 Hz – 18 KHz (± 3 dB)
Max. SPL	130 dB / 133 dB peak
Coverage Angle	60° H x 40° V
Rated Power	Low/Mid: 500W - High: 60W
Program Power	Low/Mid: 1000W - High: 120W
Crossover	1450 Hz
Nominal Impedance	Low/Mid: 8 Ω - High: 8 Ω
Shape	Trapezoidal
Connectors	2 x Neutrik speakon NL4MP
Construction	15mm Premium birch plywood
Finish	Different colours and finishing options
Dimensions	649 x 499 x 482 mm (H x W x D)
Weight	32 Kg (70 lbs)

Available in any colour and finish you like



DS-18S



- Incredible power to size ratio
- Colour and finishing options
- High performance 1400 W

The DS-18S is an extremely high power subwoofer cabinet providing exceptional low frequency reinforcement for the DS-12. It uses one 18" (4" DUO voice coil) transducer with aluminium demodulating ring in direct radiation bass reflex configuration.

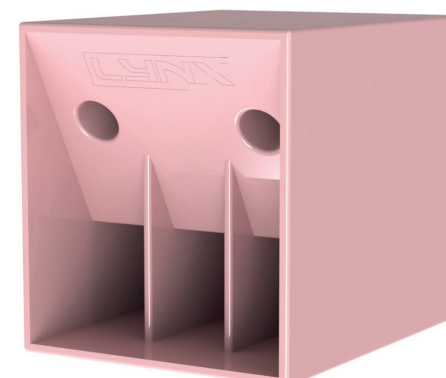
It can also be manufactured in any colour or finish to compliment any install design.



Technical Data

DS-18S	
Components	LF 1 x 18"
Frequency Range	30 Hz – 250 Hz
Frequency Response	35 Hz – 200 Hz (± 3 dB)
Max. SPL	133 dB / 136 dB peak
Coverage	360° single unit
Rated Power	1400 W
Program Power	2800 W
Nominal Impedance	8 Ω
Construction	18 mm Premium Birch plywood
Finish	Different colours and finishing options
Dimensions	639 x 585 x 733 mm (H x W x D)
Weight	42 Kg (92 lbs)

Available in any colour and finish you like





MYA Club in Valencia, Spain

MYA is a nightclub with an elegant concept located in El Umbracle, in a privileged area of the city. Lynx Pro Audio placed eight DS-12 speakers and twelve DS-18S in the BEATS room.

Follow us on



or visit our website

www.lynxproaudio.com

Lynx Pro Audio S.L

Calle 1. Pol. Ind. Picassent
Picassent, Valencia
46220 SPAIN

Tel: +34 961 109 601
Mail: info@lynxproaudio.com
Web: www.lynxproaudio.com

