



CULTURE OF SOUND



PRODUCT CATALOGUE

LATEST EDITION



Science • Art • Technology

Lynx Pro Audio has a simple philosophy:

To design and manufacture the most advanced and technologically innovative sound reinforcement available anywhere in the world.

All our products are designed in-house by highly specialized professionals and manufactured to the most exacting standards at our headquarters in Valencia, Spain. Lynx Pro Audio invests heavily in research & development enabling us to deliver superior sound systems for both professional touring and installation markets.

We recognise the importance of delivering above-average cabinets and this is demonstrated in such products as our pioneering self-powered, DSP controlled cabinets, our inclinometer and the Rainbow prediction software.

The company places integrity before compromise and our portfolio and hundreds of customers worldwide are testament to this commitment. We firmly believe that by delivering the pinnacle of sound excellence our equipment will speak for itself.

TABLE OF CONTENTS

Sound Systems 6

CLS Series 11

CLS - 212
CLS - 210
CLS - 28
CLS - 218S
CLS - 121S
CLS - 118S

CPS Series 15

CPS - 214
CPS - 210
CPS - 14
CPS - 5
CPS - 4
CPS - 18S
CPS - F10S
CSM - 210

LAIA Series 20

LAIA - 210
LAIA - 28
LAIA - 26
LAIA - 12
LAIA - 18S
LAIA - 218S

GXR Series 24

GXR - LA210A
GXR - 15
GXR - 12
GXR - D18A
GXR - D15A
GXR - 18S

CXA Series 27

CXA - 12
CXA - 18S

ADP Series 29

ADP - 212M
ADP - 15M
ADP - 12M

DS Series 31

DS - 12
DS - 18S

HR Series 33

HR - 6
HR - 108
HR - 204
HR - 206
HR - 208
HR - 1264/5 & HR - 1296/5
HR - 1564/5 & HR - 1596/5
HR - 1264/7 & HR - 1296/7
HR - 1564/7 & HR - 1596/7
HR - 218/ 36
HR - 218/ 20
HR - 215S
HR - 18/ 10

KR Series 40

KR - 12
KR - 10

BS Series 42

BS - 5
BS - 8
BS - 10
BS - 12
BS - 15
BS - 112
BS - 118

QB Series 46

QB - 5
SUB - 08

IONIC Series 48

Ionic - V28
Ionic - V24
Ionic - 100OD
Ionic - 50OD
Ionic - 5CXv
Ionic - 18S
Ionic - 12S

WCX Series 52

WCX - 8

ROX Series 54

RX - 8
RX - 10
RX - 12
RX - 15
RX - S15
RX - S18

JUNO Series 58

JN - 8T
JN - 6T

Commercial Audio 60

IXP - 6
IXP - 4
IXP - 8SUB

CS - 6T
CS - 8SUB

Processors 63

LUKA Series
ARK-70 & ARK-20 Series

Amplifiers 68

GTX Series
MP Series
MH Series
SBA Series
TS Series
RS Series

Software 76

Rainbow 3D
Online Control System
ARK Processor
Cabinet Updater

Professional Sound Systems



CLS Series

The CLS (Coaxial Line Source) Series is our newest scalable line array solution. Coaxial Mid/high drivers together with full electronic synergy through coupling of the system amplification & integrated DSP technology.



CPS Series

The CPS (Coaxial Point Source) Series is our brand new high power, point source system. The series includes five coaxial point source systems, two sub-basses and one stage monitor.



LAIA Series

The LAIA series is a compact, self-powered Line Array system with advanced DSP, delivering superior sound quality for indoor and outdoor use. It includes efficient Class D amplification and easy setup accessories.



GXR Series

Both compact and powerful, the GXR Series is our solution for portable, light weight, powered speakers. The series consists of six different cabinets, with two full range (two-way) models including three subwoofers, as well as our best-selling line array GXR-LA-210A.



CXA Series

The CXA constant curvature line source has been designed for both touring and permanent installations, where wide coverage is required from as few elements as possible.



ADP Series

The ADP cabinets have been designed for both portable and permanent installations. The series includes three stage monitors cabinets.

Professional Sound Systems



DS Series

The DS series offer a full range horn loaded cabinet and a extremely high power sub-bass enclosure, both specifically designed for club and discotheque installs.



HR Series

The HR Series has been designed to offer the utmost sound quality for installations. The range consists of 9 different two-way, full-range and 4 subwoofer options, all delivering high output whilst retaining exceptional clarity, efficiency and guaranteeing lower distortion. White version available.



KR Series

KR Series have been specifically designed for installations where high volume is required whilst delivering excellent vocal clarity with low distortion, such as KTV rooms or clubs.



BS Series

The BS series has been designed to offer an affordable yet reliable series of cabinets with great performance and a sleek & attractive design with finish, so that they not only sound great but also look impressive in any install.



QB Series

The QB series comprises one two-way, passive full range cabinet and one subwoofer and is the smallest series that Lynx Pro Audio offers, designed and intended for background sound reinforcement where the power of the HR or BS series is not required.



Ionic Series

Column speakers for portable or permanent applications where a low profile, discreet design is required. The Ionic comprises four modular columns, one coaxial full range and two subwoofers.

Professional Sound Systems



WCX Series

The WCX Series have been designed to offer the utmost sound quality for indoor and outdoor installations, engineered to withstand the harshest weather conditions.



JUNO Series

The Juno Series are weather-resistant, two-way full range loudspeakers. Ideal for indoor or outdoor applications. The system conforms to IP46 international standard. With line transformer available. In black or white colour.



ROX Series

The ROX Series comprises 4 full-range multipurpose, self-powered cabinets with FIR filters and 2 subwoofers, offering exceptional sound quality value in a variety of environments.



Commercial audio

Lynx Pro Audio's commercial audio ranges include the CS and IXP in-ceiling speakers for voice and background sound.



Processors

Lynx Pro Audio offers two series of processors: LUKE and ARK series. LUKE series are our latest digital processors with FIR filters. We also have the ARK series available.



Amplifiers

GTX, MP, MH, SBA, TS and RS series are at the forefront of audio design, offering powerful, reliable and lightweight amplifiers.



CLS Series

COAXIAL LINE ARRAY SPEAKERS

The CLS (Coaxial Line Source) Series is our scalable line array solution.

There are three full range cabinets available, CLS-212, CLS-28 and CLS-210 and also three sub-bass options; CLS-121S, CLS-218S and CLS-118S all designed to offer incredible output in the most compact format possible.

Extreme care has been taken to select and customize the most advanced components on the market, including coaxial Mid/high drivers together with full electronic synergy through the coupling of the system amplification & integrated DSP technology.

Total system control is also achieved through our 3D prediction software (Rainbow 3D) working together with our remote system management platform (OCS).

- ✓ Live events
- ✓ Auditoriums
- ✓ Theatres
- ✓ Large stadiums / arenas
- ✓ Houses of worship

CLS-212



The CLS-212 is a high-output extremely compact and extremely powerful 3-way, self-powered, DSP integrated, symmetrical coaxial line source element designed for large and medium sized touring & fixed installations.

Components	LF: 2 x 12", 4" DUO double layer in/out copper voice coil, waterproof cone treated on both sides, Neodymium magnet. 1400 W (AES) MF/HF: 2 x 6.5" dual diaphragm coaxial planar wave driver Mid: 3.5" (90 mm) voice coil, 150 W (AES) High: 1.5" (44.4 mm) voice coil, 80 W (AES)
Max SPL	142 dB / 148 dB peak
Crossover	Digital: FIR filter 550 Hz Passive: 6.3 KHz
DSP Processing	96 KHz / 64 bit double-precision, DSP with FIR filter linear phase. Passive version available
Power	6000 W Class-D with switching power supply & PFC LF/MF/ HF amplifier: 1 x 3000 W
Control	User control interface with 2.8" IPS and joystick controller
Control connection	USB (DSP programming)/ Dual Ethernet port / OCS
Dimensions	384 x 800 x 480 mm (H x W x D) without pins
Weight	47 Kg (103.6 lbs)

CLS-210



The CLS-210 is a high-output extremely compact and extremely powerful 3-way, self-powered, DSP integrated, symmetrical coaxial line source element designed for medium sized touring & fixed installations.

Components	LF: 2 x 10", (3" DUO double layer in/out copper voice coil), Waterproof cone treated on both sides, Neodymium magnet. 1400 W (AES) MF: 3" (76 mm) voice coil, 90 W (AES)/ HF: 2" (51 mm) voice coil, 50 W (AES)
Max SPL	136 dB / 142 dB Peak
DSP Processing	96 KHz / 64 bit double-precision, DSP with FIR filter linear phase
Crossover	Digital: FIR Filter 550Hz
Power	4000 W Class-D with switching power supply & PFC
Control	User control interface with 2.8" IPS and joystick controller
Control connection	USB (DSP programming)/ Dual Ethernet port / OCS
Dimensions	300 x 800 x 480 mm (H x W x D)
Weight	33 Kg (72.75lbs)

CLS-28



The CLS-28 is a high-output extremely compact and powerful 3-way, self-powered, DSP integrated, symmetrical coaxial line source element designed for medium sized touring & fixed installations.

Components	LF: 2 x 8"(2.5" DUO double layer in/out copper voice coil), waterproof cone treated on both sides, neodymium magnet. 1000 W AES MF/HF: 8" dual diaphragm coaxial planar wave driver
Max SPL	135 dB / 141 dB
DSP Processing	96 KHz / 64 bit double-precision, DSP with FIR filter linear phase
Crossover	Digital: FIR filter 550 Hz Passive: 6.3 KHz
Power	2800 W Class D with switching power supply & PFC
Control	User control interface with 2.8" IPS and joystick controller
Control connection	USB (DSP programming)/ Dual Ethernet port / OCS
Dimensions	254.5 x 600 x 480 mm (H x W x D) without pins 613.5 mm (W)
Weight	27 Kg (59.5 lbs)

CLS-218S



The CLS-218S is a high-output, extremely powerful sub-bass element designed to be used in unison with the coaxial CLS-212 or CLS-28 line array module. Compact & extremely powerful, self-powered (6000 W Class D with PFC), DSP integrated sub-bass unit in direct radiation configuration.

Components	Dual 18" Neodymium magnet transducer. 4.5" split winding copper voice coil. Waterproof cone treated on both sides. Aluminium demodulating ring for very low distortion. 1700 W (AES)
Max SPL	136 dB / 142 dB Peak
Coverage	QUASI omnidirectional
DSP Processing	96 KHz / 64 bit double-precision
Power	6000 W Class-D with switching power supply & PFC
Control	User control interface with 2.8" IPS and joystick controller
Control connection	USB (DSP programming)/ Dual Ethernet port / OCS
Dimensions	600 x 1200 x 770 mm (H x W x D)
Weight	81 Kg (178.5 lbs)

CLS-121S



The CLS-121S is a high-output, extremely powerful sub-bass element designed to be used in unison with the coaxial CLS-212 and CLS-210 line array module. Compact & extremely powerful, self-powered (3000 W Class-D with PFC), DSP integrated subwoofer unit in direct radiation configuration.

Components	LF: 21" Neodymium magnet transducer. 4" quattro in/out copper voice coil, Waterproof cone treated on both sides. Malt Cross Technology cooling system. Aluminium demodulating ring for very low distortion. 1600 W (AES)
Max SPL	131 dB / 137 dB Peak
Coverage	QUASI omnidirectional
DSP Processing	96 KHz / 64 bit double-precision. Passive version available
Power	3000 W Class D with switching power supply & PFC
Control	User control interface with 2.8" IPS and joystick controller
Control connection	USB (DSP programming)/ Dual Ethernet port / OCS
Dimensions	608 x 800 x 778 mm (H x W x D) without pins 814.5 mm (W)
Weight	64 Kg (141 lbs)

CLS-118S



The CLS-118S is a high-output, extremely powerful sub-bass element designed to be used in unison with the coaxial CLS-28 line array module. Compact & extremely powerful, self-powered (3000 W Class-D with PFC), DSP integrated subwoofer unit in direct radiation configuration.

Components	18" Neodymium magnet transducer. 4.5" split winding copper voice coil, Waterproof cone with treatment for both sides. Aluminium demodulating ring for very low distortion. 1700 W (AES)
Max SPL	131 dB / 137 dB Peak
Coverage	QUASI omnidirectional
DSP Processing	96 KHz / 64 bit double-precision. Passive version available
Power	3000 W Class D with switching power supply & PFC
Control	User control interface with 2.8" IPS and joystick controller
Control connection	USB (DSP programming)/ Dual Ethernet port / OCS
Dimensions	600 x 613 x 770 mm (H x W x D) without pins 609 x 613 mm (H x W)
Weight	58 Kg (127.8 lbs)

CPS Series

COAXIAL POINT SOURCE

The CPS (Coaxial Point Source) Series is our brand new high power, point source system.

There are five point source cabinets available, CPS-4, CPS-5, CPS-14, CPS-214 and CPS-210 together with two sub-bass unit, CPS-18S and the new CPS-F10S and one stage monitor, CSM-210. Extreme care has been taken to select and customize the most advanced components on the market, including coaxial Mid/high drivers together with full electronic synergy through the coupling of the system amplification & integrated DSP technology.

Using Lynx Pro Audio's cutting edge softwares (Rainbow 3D and OCS) together with the CPS technology provides the most optimum and precise listening experience to every ear in the audience.

- ✓ Live events
- ✓ Clubs
- ✓ Theatres
- ✓ Medium sized stadiums / arena
- ✓ Auditoriums

CPS-214



The CPS-214 is a high-output extremely compact and extremely powerful 3-way, self-powered, DSP integrated, symmetrical Coaxial Point Source element designed for large sized touring & fixed installations. Dual high power 14" neodymium transducers and a unique 2" Exit throat (HF 1.75" voice coil/ MF 3.5" voice coil) coaxial neodymium compression driver.

Components	LF: 2 x 14" (4" voice coil), neodymium magnet, 2000 W (AES) MF: 3.5" (90 mm) voice coil, 150W (AES) HF: 1.5" (44,4 mm) voice coil, 80W (AES)
Max SPL	Low: 137 dB / 143 dB Mid/ High: 139.5 dB / 142.5 dB
Coverage	Rotatable 60°H x 40°V
DSP Processing	96 KHz / 64 bit double-precision, DSP with FIR filters. Passive version available
Power	6000 W Class D with switching power supply & PFC Amp: 3000W @4 Ohm - MF/HF Amp: 3000 W @4 Ohm
Control	User control interface with 2.8" IPS and joystick controller
Control connection	USB (DSP programming)/ Dual Ethernet port / OCS
Dimensions	900 x 420 x 515 mm (H x W x D)
Weight	49 Kg (108 lbs)

CPS-210 (64/96)



The CPS-210 is a high-output extremely compact and extremely powerful 3-way, tri-amplified, DSP integrated, symmetrical Coaxial Point Source element designed for medium sized touring & fixed installations. Dual high power 10" neodymium transducers and a unique 1.4" Exit throat (HF 2" voice coil/ MF 3" voice coil) coaxial neodymium compression driver.

Components	LF: 2 x 10" (3" voice coil), neodymium magnet, 1400 W AES MF: 3" (76 mm) voice coil, 90 W (AES) HF: 2" (51 mm) voice coil, 50 W (AES)
Max SPL	Low: 130.5 dB / 136.5 dB Mid/ High: 131 dB / 137 dB
Coverage	Rotatable 60°H x 40°V / 90°H x 60°V
DSP Processing	96 KHz / 64 bit double-precision, DSP with FIR filters. Passive version available
Power	3000 W Class D with switching power supply & PFC LF: 1 x 1500 W / MF: 1 x 750 W / HF: 1 x 750 W
Control	User control interface with 2.8" IPS and joystick controller
Control connection	USB (DSP programming)/ Dual Ethernet port / OCS
Dimensions	710 x 350 x 428 mm (H x W x D)
Weight	35 Kg (77.1 lbs)

CPS-14 (64/96)



The CPS-14 is a high-output extremely compact and extremely powerful 3-way, tri-amplified, DSP integrated, symmetrical Coaxial Point Source element designed for medium sized touring & fixed installations. High power 14" neodymium transducer and a unique 1.4" Exit throat dual diaphragm coaxial driver.

Components	LF: 1 x 14" (4" voice coil), neodymium magnet, 1000 W AES MF: 3" (76 mm) voice coil, 90 W (AES) / HF: 2" (51 mm) voice coil, 50W (AES)
Max SPL	Low: 130 dB / 136 dB Mid/ High: 132 dB / 138 dB
Coverage	Rotatable 60°H x 40°V / 90°H x 60°V
DSP Processing	96 KHz / 64 bit double-precision, DSP with FIR filters. Passive version available
Power	3000 W Class D with switching power supply & PFC LF: 1 x 1500 W / MF: 1 x 750 W / HF: 1 x 750 W
Control	User control interface with 2.8" IPS and joystick controller
Control connection	USB (DSP programming)/ Dual Ethernet port / OCS
Dimensions	755 x 415 x 430 mm (H x W x D)
Weight	33 Kg (72.7 lbs)

CPS-5



The CPS-5 is a passive coaxial point source system. Compact & versatile, easy to use portable speaker. 5" coaxial speaker offering a coverage of 70° conical dispersion and 117 dB SPL.

Components	1 x 5" coaxial speaker with LF 1.5" and HF 1" voice coil
Sensitivity	93 dB (1W@1m)
Max SPL	114 dB – 120 dB Peak
Coverage	70° conical dispersion
Power	150 W AES (300 W program, 600 W peak)
Nominal impedance	16 Ω
Dimensions	152 x 152 x 221 mm (H x W x D)
Weight	3 Kg (6.6 lbs)

CPS-4



The CPS-4 is a passive coaxial point source system. Compact & versatile, easy to use portable speaker. 4" coaxial speaker offering a coverage of 90° conical dispersion and 109 dB SPL.

Components	1 x 4" coaxial speaker
Sensitivity	86 dB (1W@1m)
Max SPL	106 dB – 112 dB Peak
Coverage	90° conical dispersion
Power	100 W AES (200 W program, 400 W peak)
Nominal impedance	16 Ω
Dimensions	122 x 122 x 131 mm (H x W x D)
Weight	1.5 Kg (3.3 lbs)

CPS-18S



The CPS-18S is a high-output, extremely powerful sub-bass element designed to be used in unison with the coaxial CPS-214 point source module. Compact & extremely powerful, self-powered (3000 W Class-D with PFC), DSP integrated subwoofer unit in band pass configuration. 18" (4" voice coil) transducer.

Components	1 x 18" (4" QUATTRO in/out copper voice coil), waterproof cone with treatment for both sides
Max SPL	132 dB / 138 dB Peak
Coverage	QUASI omnidirectional
DSP Processing	96 KHz / 64 bit double-precision. Passive version available
Power	3000 W Class D with switching power supply & PFC
Control	User control interface with 2.8" IPS and joystick controller
Control connection	USB (DSP programming)/ Dual Ethernet port / OCS
Dimensions	600 x 900 x 750 mm (H x W x D)
Weight	62 Kg (136.6 lbs)

CPS-F10S



The CPS-F10S is ultracompact light weight flat design passive subwoofer offering high-performance for background sound applications. Thanks to the discrete design can be installed in multiple applications. It features a 10" transducer with rubber surround, is made from 15 mm premium birch plywood and coated polyurea paint.

Components	1 x 10" transducer 2,5" voice coil
Max SPL	116 dB – 122 dB Peak (X90Hz)
Coverage	QUASI omnidirectional
Nominal Impedance	8 Ohm
Power	300 W AES, 600 W program, 1200 W
Connectors	2 X NEUTRIK Speakon NL4 Pin connections: +1 / -1 input +1 / -1 link
Dimensions	595 x 595 x 170 mm (H x W x D)
Weight	18 KG (39,68 lbs)

CSM-210 (65/85)



The CSM-210 is a high-output extremely compact and extremely powerful 3-way tri-amplified, self-powered, DSP integrated, symmetrical Mid/High Coaxial Driver designed for stage monitor or conventional point source use.

Components	LF: 2 x 10" (3" voice coil) Neodymium magnet. 1400 W (AES) MF: 3" (76 mm) voice coil, 90 W (AES) HF: 2" (51 mm) voice coil, 50 W (AES)
Max SPL	Low: 130.5 dB/ 136.5 dB - Mid/ High: 131 dB/ 137 dB
Coverage	Rotable 60°H x 50°V x 80°H x 50°V
DSP Processing	Internal Lynx Processor DSPB-FL 96 Hz / 64 bit double-precision, DSP with FIR filter linear phase
Power	3000W Class D with switching power supply & PFC LF: 1 x 1500 W MF: 1 x 750 W HF: 1 x 750 W
Control	User control interface with 2.8" IPS and joystick controller
Control connection	USB (DSP programming)/ Dual Ethernet port
Dimensions	407 x 588 x 572 mm (H x W x D)
Weight	30 Kg (77.1 lbs)

LAIA Series

NEW COMPACT AND POWERFUL ARRAY

Introducing the new LAIA series, an expanded range comprising three high-performance line array modules LAIA-210, LAIA-28 and LAIA-26, the versatile LAIA-12 point source cabinet and two powerful subwoofers LAIA-18S and LAIA-218S. All systems are self-powered with integrated DSP, offering an ideal solution for a wide variety of indoor and outdoor applications where a compact, practical and reliable system is required. This professional system provides a versatile choice for everything from ultra-compact setups to high-output configurations, ensuring precise coverage and superior sonic clarity across the entire range.

Special care has been taken to design a first-class line array delivering superior sound quality and ease of use for both fixed installations and rental applications.

Select components include tetracoil technology that allows the inductance to be linearized and provides the perfect balance between the driver and the ultra linear suspension, allowing a very high excursion and extreme precision in the mid-band with the lowest intermodulation distortion on

the professional market.

Class D amplified, with universal switching power supply and a PFC system for better optimization of input voltage and current and lower consumption. Equipped with a powerful next-generation 64-bit/96KHz DSP designed and manufactured by Lynx Pro Audio, it offers the most recent advances in digital processing, such as FIR filters, which offer linear frequency and phase response. The latest 32-bit/96KHz AD/DA converters make the system one of the most advanced and innovative line arrays on the market, resulting in superior sound quality. Additionally, LAIA series systems can be controlled remotely using the OCS control platform, giving the user the ability to control the systems without the need for external processors.

Crafted with attention to detail, a series of accessories are available specially designed for this series, including a 3-point flying system together with stack system. The system can also be mounted and angled in the rest position, which makes it extremely easy to configure without having to lift each enclosure individually.

✓ Touring

✓ Theatres

✓ Large stadiums | arenas

✓ Houses of worship

✓ Fixed installations

✓ Live events

LAIA-210



High Output, self powered (class D switch mode power supply with PFC), line array element. It consists of a 2 x 10" (2" voice coil) transducer with 1.4" exit throat driver with waveguide system delivering 100°H x 10°V precise coverage. DSP (FIR technology) controlled with 2000W amplification, 138 dB peak.

Components	LF: 2 x 10", 2" voice coil, Tetracoil ultra linear motor HF: 1 x 1.4" exit throat, (3" voice coil) with titanium diaphragm
Max SPL	132dB / 138dB Peak
Coverage	100° H x 10 ° V
DSP Processing	96 KHz / 64 bit double-precision
Power	2000 W (4000 W Peak) Class D with switching power supply & PFC LF amplifier: 1 x 1600 W RMS, 1600 W peak HF amplifier: 1 x 400 W RMS, 800 W peak
Control	User control interface with 2.8" IPS screen and multifunction joystick controller
Control connection	USB (DSP programming) / Dual Ethernet port
Dimensions	303 x 749 x 473 mm (H x W x D) without pins
Weight	30 Kg (66.13 lbs)

LAIA-28



The LAIA-28 is an ultra-compact, high-performance self-powered line array. It features a total of 1200 W Class-D amplification. It consists of dual 8" (2" voice coil) high-performance transducers and a 1.4" exit throat driver with a waveguide system providing precise 100°H x 8°V coverage. It achieves an impressive 133 dB peak SPL.

Components	LF: 2 x 8" (2" voice coil), Tetracoil ultra linear motor HF: 1 x 1.4" exit throat, (3" voice coil) with titanium diaphragm
Max SPL	130 dB / 136 Peak
Coverage	100° H x 10 ° V
DSP Processing	96 KHz / 64 bit double-precision, DSP with FIR filters
Power	1200 W Class D with switching power supply & PFC
Control	User control interface with 2.8" IPS screen and multifunction joystick controller
Control connection	USB (DSP programming) / Dual Ethernet port
Dimensions	247 x 600 x 444 mm (H x W x D) without pins
Weight	25 kg (55.12 lbs)

LAIA-26



The LAIA-26 is an ultra-compact, self-powered line array element designed to deliver high performance in a discreet format. It consists of a 2 x 6" (2" voice coil) transducer and a 1" exit throat driver with a waveguide system providing precise 100°H x 8°V coverage.

Components	LF: 2 x 6", 2" voice coil, waterproof treatment HF: 1 x 1" exit throat 1.75" voice coil
Max SPL	124dB / 130 dB Peak
Coverage	100° H x 8 ° V
DSP Processing	DSP Lite 96 KHz / 64 bit double-precision
Power	1200 W (2400 W peak) Class D with switching power supply LF amplifier: 1 x 800 W RMS, 1600 W Peak HF amplifier: 1 x 400 W RMS, 800 W Peak
Control	User control interface
Control connection	USB (DSP programming) / Dual Ethernet port
Dimensions	181 x 549 x 356.8 mm (H x W x D) without pins
Weight	15 Kg (33.07lbs)

LAIA-12



The LAIA-12 is a medium-format, multi-purpose, and powerful self-powered point source system. It features 1200 W Class-D bi-amplification. It consists of a 12" (3" voice coil) high-performance transducer and a 1" exit throat driver providing precise 90°H x 60°V coverage. It delivers a 132 dB peak SPL

Components	LF: 12", 3" voice coil, waterproof treatment for both sides HF: 1 x 1" exit throat 1.75" voice coil
Max SPL	126 dB / 132 dB Peak
Coverage	90° H x 60 ° V
DSP Processing	96 KHz / 64 bit double-precision
Power	1200 W Class D (2400 W Peak) with switching power supply LF amplifier: 1 x 800 W, 1600 W Peak HF amplifier: 1 x 400 W, 800 W Peak
Control	User control interface with 2.8" IPS screen and multifunction joystick controller
Control connection	USB (DSP programming) / Dual Ethernet port
Dimensions	645 x 370 x 379mm (H x W x D)
Weight	25 Kg (55.12 lbs)

LAIA-18S



The LAIA-18S is a high-performance, extremely powerful sub-bass element designed to complement both Point Source and Line Array systems. Compact and advanced, this self-powered unit features 1200 W Class-D amplification. It delivers 138 dB peak SPL.

Components	18", 4" voice coil
Max SPL	132 dB / 138 dB Peak
Coverage	Omnidirectional
DSP Processing	96 KHz / 64 bit double-precision
Power	1200 W (2400 W Peak) Class D with switching power supply
Control	User control interface with 2.8" IPS screen and multifunction joystick controller
Control connection	USB (DSP programming) / Dual Ethernet port
Dimensions	705 x 606 x 729 mm (H x W x D)
Weight	55 Kg (121.25 lbs)

LAIA-218S



The LAIA-218S is a high-performance, dual 18" self-powered subwoofer designed to provide an ideal low-frequency solution for both indoor and outdoor applications. Extremely powerful, this unit features a total of 4000 W Class-D amplification controlled by DSP, offering 142 dB SPL peak.

Components	2 x 18", 4" voice coil
Max SPL	136 dB / 142 dB Peak
Coverage	Omnidirectional
DSP Processing	96 KHz / 64 bit double-precision
Power	4000 W Class D with switching power supply & PFC, 2 x 2000 W
Control	User control interface with 2.8" IPS screen and multifunction joystick controller
Control connection	USB (DSP programming) / Dual Ethernet port
Dimensions	605 x 1205 x 725 mm (H x W x D)
Weight	98 kg (216.05 lbs)

GXR Series

SELF-POWERED PORTABLE SPEAKERS

Both compact and powerful, the GXR Series is our solution for portable, light weight, powered speakers. This series has been designed to offer first class portable systems as economically as possible without compromising at all on quality. The series incorporates one line array module (dual 10") two full range, two-way models (12", and 15") and three subwoofers (18", dual 15% & dual 18").

All models are self-powered (Class D) with switching power supply. The integrated amplification far exceeds the transducers' needs thus resulting in high output, high damping factor and extremely low levels of distortion. The high efficiency modules also includes PFC, guaranteeing reliability and consistency in all operating conditions and low power consumption (less than 0.55W in standby).

All GXR Series cabinets are also controlled by the latest generation of Digital Signal Processing, with a DSP integrated into each cabinet. This DSP, with 56-bit internal processing and double dynamics, optimises all the system components and electronics, providing maximum system efficiency and total protection whilst significantly and noticeably lowering distortion. They also utilise linear-phase FIR filters.

All the cabinets are finished in rugged, premium birch plywood, coated with polyurea and protected by front steel grilles all backed with a special dark grey triple layer acoustical textile which allows greater air flow and reduces heat and humidity.



Touring



Large stadiums / arenas



Fixed installations



Theatres



Houses of worship



Live events

GXR-LA210A



The GXR-LA210A is the ideal solution for install projects and live events where a powerful but compact line array is required. The GXR-LA210A is a self-powered (Class D), two-way enclosure that delivers high power levels from a very compact format.

Components	LF: 2 x 10" (2" voice coil) Malt Cross Cooling System HF: 1 x 1.4" exit throat (3" voice coil) with titanium diaphragm
Max SPL	135 dB Peak
Coverage	100° H x 10° V
DSP Processing	96 KHz / 64 bit double-precision, DSP with FIR filters
Power	1400 W Class D with switching power supply & PFC
Control	User control interface with 2.8" IPS and joystick controller
Control connection	Ethernet (OCS) / USB (DSP updating)
Dimensions	298 x 790 x 436 mm (H x W x D)
Weight	31 kg (68.2 lbs)

GXR-15



The GXR-15 enclosure is a multipurpose full-range self-powered that stands out for its high performance, with an excellent power-size ratio. It does not need to carry an external amplification rack and is ideal for a wide variety of applications, both in fixed installations and portable applications since its trapezoidal design allows it to function even as a stage monitor.

Components	LF: 15" 2,5" voice coil, Malt Cross Cooling System HF: 1" Exit compression Driver , 1,7" aluminium voice coil
Max SPL	128 dB Peak
Coverage	90° x 40° constant directivity horn. Rotatable
DSP Processing	96 KHz / 64 bit double-precision, DSP with FIR filters
Power	1400 W Class D with switching power supply & PFC
Control	User control interface with 2.8" IPS and joystick controller
Control connection	Ethernet (OCS) / USB (DSP updating)
Dimensions	730 x 444 x 433 mm (H x W x D)
Weight	28.5 kg (62.8 lbs)

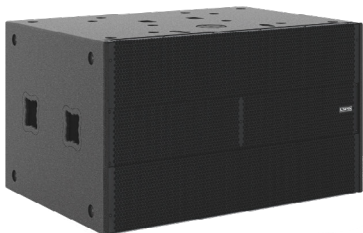
GXR-12



The GXR-12 enclosure is a multipurpose full-range self-powered that stands out for its high performance, with an excellent power-size ratio. It does not need to carry an external amplification rack and is ideal for a wide variety of applications, both in fixed installations and portable applications since its trapezoidal design allows it to function even as a stage monitor.

Components	LF: 12" 2,5" voice coil, Malt Cross Cooling System HF: 1" Exit compression Driver , 1,75" aluminium voice coil
Max SPL	127 dB Peak
Coverage	90° x 40° constant directivity horn. Rotatable
DSP Processing	96 KHz / 64 bit double-precision, DSP with FIR filters
Power	1400 W Class-D with switching power supply & PFC
Control	User control interface with 2.8" IPS and joystick controller
Control connection	Ethernet (OCS) / USB (DSP updating)
Dimensions	639 x 370 x 386 mm (H x W x D)
Weight	23.5 kg (51.7 lbs)

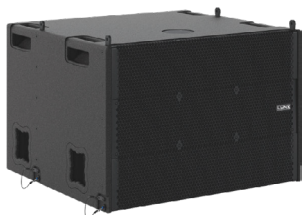
GXR-D18A



The GXR-D18A is part of the GXR line array system (ideal for install projects and live events where a compact line array is required). This subwoofer is the perfect solution where extreme low frequency support is required. Specifically designed to be stacked and are very easy to use and control without the need for any external amps.

Components	2 x 18", 4" voice coil
Max SPL	135 dB / 141 dB Peak
Coverage	Omnidirectional
DSP Processing	96 KHz / 64 bit double-precision, DSP with FIR filters
Power	3000 W Class-D with switching power supply & PFC
Control	User control interface with 2.8" IPS and joystick controller
Control connection	Ethernet (OCS) / USB (DSP updating)
Dimensions	605 x 1100 x 750 mm (H x W x D)
Weight	92 kg (202 lbs)

GXR-D15A



The GXR-D15A is a self-powered 3000 W (class D) subwoofer that delivers high power levels from a very compact format. This subwoofer is designed to be flown or stacked in perfect combination with the GXR-LA210A and is the ideal solution for install projects and live events where a compact line array is required.

Components	2 x 15", 4" voice coil
Max SPL	134 dB / 140 dB Peak
Coverage	Omnidirectional
DSP Processing	96 KHz / 64 bit double-precision, DSP with FIR filters
Power	3000 W Class-D with switching power supply & PFC
Control	User control interface with 2.8" IPS and joystick controller
Control connection	Ethernet (OCS) / USB (DSP updating)
Dimensions	505 x 790 x 690 mm (H x W x D)
Weight	63 kg (139 lbs)

GXR-18S



The GXR-18S model is a self-powered subwoofer enclosure specially designed to reinforce the low frequencies of the full range models of the GXR series. You do not need to carry an external amplification rack and it is an excellent option for subwoofer reinforcement in general.

Components	1 x 18" (3" voice coil)
Max SPL	132 dB Peak
Coverage	Omnidirectional
DSP Processing	96 KHz / 64 bit double-precision, DSP with FIR filters
Power	1400 W Class-D with switching power supply & PFC
Control	User control interface with 2.8" IPS and joystick controller
Control connection	Ethernet (OCS) / USB (DSP updating)
Dimensions	505 x 505 x 700 mm (H x W x D)
Weight	41 kg (90 lbs)



CXA Series

CONSTANT CURVATURE LINE SOURCE

The CXA is intended as a flexible solution for both fixed installations and touring where wide coverage is required from as few line array elements as possible.

Designed to be flown either horizontally or vertically, this line source system can be used as a single element or a combination of a maximum of 4 cabinets in array configuration delivering a 72° coverage in the vertical plane.

- ✓ Live events
- ✓ Theatres
- ✓ Large stadiums / arenas
- ✓ Houses of worship

Our custom HF Multidriver Waveguide system delivers 100H x 18V precise coverage for a multitude of installations. Thanks to its careful construction it can also be installed for symmetrical HF dispersion.

The enclosures have a complete range of accessories that facilitate their use both in touring and in fixed installations.

- ✓ Fixed installations
- ✓ Auditoriums
- ✓ Interior live PA
- ✓ Clubs

CXA-12



The CXA-12 enclosure is a constant curvature line array element designed for multiple configurations, with a maximum of 4 enclosures. It is ideal for a wide variety of applications, its design allows you to configure installations with symmetrical dispersion or fly the boxes vertically.

Components	LF: 12", 2.5" voice coil, Malt Cross Cooling System HF: custom Multidriver system with wave guide, 1.4" aluminium voice coil with titanium diaphragm
Max SPL	128 dB Peak
Coverage	100° H x 18 ° V
DSP Processing	96 KHz / 64 bit double-precision, DSP with FIR filters
Power	1400 W Class D with switching power supply & PFC
Control	Ethernet (OCS) / USB (DSP updating)
Control connection	USB (DSP programming)/ Dual Ethernet port / OCS
Dimensions	357 x 632 x 484 mm (H x W x D)
Weight	31 kg (68 lbs)

CXA-18S



The CXA-18S is a self-powered subwoofer enclosure specially designed to reinforce the low frequencies of the CXA-12 linear array elements. It can be flown or stacked with the CXA-12 without the need for any rigging accessories.

Components	LF: 18", 4" voice coil, Neodymium magnet assembly
Max SPL	132 dB Peak
Coverage	Omnidirectional
DSP Processing	96 KHz / 64 bit double-precision, DSP with FIR filters
Power	1400 W Class-D with switching power supply & PFC
Control	User control interface with 2.8" IPS and joystick controller
Control connection	Ethernet (OCS) / USB (DSP updating)
Dimensions	556 x 632 x 696 mm (H x W x D)
Weight	45 kg (99 lbs)

ADP Series

FIRST CLASS POWERED STAGE MONITORS

These cabinets have been designed to offer the utmost sound reinforcement reliability, incorporating the latest acoustical and electronic technology and delivering incredible, dynamic sound.

The ADP Series has been designed to offer high levels of SPL and sound clarity whilst maintaining a compact and portable design to offer an unbeatable power to size ratio.

- ✓ Houses of worship
- ✓ Portable sound reinforcement
- ✓ Small | middle sized clubs
- ✓ Auditoriums & Theatres
- ✓ Smaller live stages | events
- ✓ Front fill | side fill reinforcement



ADP-212M



The ADP-212M Stage monitor has an unbeatable power to size ratio, there is no need for external amplification racks. High output, self powered (class D switch mode power supply) with PFC (Power Factor Correction), two-way stage monitor.

Components	LF/MF: 2x12" HF: 1.4" titanium diaphragm HF driver
Max SPL	136 dB / 139 dB Peak
Coverage	55° H x 55° V
DSP Processing	56 bit Lynx DSPB-22 with FIR filters
Power	2250 W Class D
Control	User control interface with 2.8" IPS and joystick controller
Control connection	XLR / Ethernet (OCS) optional
Dimensions	445 x 688 x 655 mm (H x W x D)
Weight	42 kg (92 lbs)

ADP-15M



The ADP-15M Stage monitor is an extremely high power, high sensitivity two-way stage monitor providing exceptional performance. Each cabinet has a DSP integrated for system protection and optimization. This DSP applies linear phase (FIR) and classical crossovers. Weight and performance are two important considerations when choosing a monitor.

Components	LF/MF: 1 x 15" coaxial neodymium HF: 1.4" titanium HF compression driver
Max SPL	130 dB / 133 dB Peak
Coverage	90° H x 90° V
DSP Processing	56 bit Lynx DSPB-22 with FIR filters
Power	1400 W Class D
Control	User control interface with 2.8" IPS and joystick controller
Control connection	XLR / Ethernet (OCS) optional
Dimensions	434 x 620 x 618 mm (H x W x D)
Weight	26 kg (57 lbs)

ADP-12M



The ADP-12M Stage monitor is an extremely high power, high sensitivity two-way stage monitor providing exceptional performance. Each cabinet has a DSP integrated for system protection and optimization. This DSP applies linear phase (FIR) and classical crossovers. Weight and performance are two important considerations when choosing a monitor.

Components	LF/MF: 1 x 12" coaxial neodymium HF: 3" VC HF compression driver
Max SPL	129 dB / 132 dB Peak
Coverage	40° H x 60° V
DSP Processing	56 bit Lynx DSPB-22 with FIR filters
Power	1400 W Class D
Control	User control interface with 2.8" IPS and joystick controller
Control connection	XLR / Ethernet (OCS) optional
Dimensions	370 x 470 x 554 mm (H x W x D)
Weight	20 kg (44 lbs)

DS Series

CLUBBING SYSTEM

The DS series offer a full range horn loaded cabinet and a extremely high power sub-bass enclosure, both specifically designed for club and discotheque installs.

Manufactured as standard with premium birch plywood and finished with poliurea coating it can also be manufactured in any colour (RAL) or finish to compliment any install design.

The DS cabinets are designed to not only be pleasing to the eye but also to the ear.

- ✓ Multi media spaces
- ✓ Clubs & bar installations
- ✓ Discotheques

DS-12



Available in any colour and finish you like, the DS-12 is designed to not only be pleasing to the eye but also to the ear. The horn loaded, high power DS-12 is primarily designed for installations, especially clubs/discos, is bi-amplified and can also be manufactured as a self-powered version to deliver all the features such as FIR that Lynx Pro Audio electronics deliver.

It uses an exponential 12" Driver (64mm aluminium voice coil) for the low/mid and the high frequencies are looked after by a 1.4" neodymium compression driver with titanium diaphragm and mylar surround. The special GFK/Sandwich horn delivers 60° x 40° coverage.

Components	LF/MF 1 x 12" + 1.4" titanium diaphragm HF driver
Max SPL	130 dB / 133 dB Peak
Coverage	60° H x 40° V
Power	Low/Mid: 500 W (1000 W program), High: 60 W (120 W program)
Crossover	1450 Hz
Dimensions	649 x 499 x 482 mm (H x W x D)
Finish	Different colours (RAL) and finishing options
Weight	32 Kg (70 lbs)

DS-18S



The DS-18S is an extremely high power subwoofer cabinet providing exceptional low frequency reinforcement for the DS-12. It uses one 18" (4" DUO voice coil) transducer with aluminium demodulating ring in direct radiation bass reflex configuration. Manufactured as standard with premium birch plywood and finished with polyurea coating it can also be manufactured in any colour or finish to compliment any install design.

Components	LF: 1 x 18"
Max SPL	133 dB / 136 dB Peak
Coverage	360° single unit
Power	1000 W (2000 W program)
Dimensions	639 x 585 x 733 mm (H x W x D)
Finish	Different colours (RAL) and finishing options
Weight	42 Kg (92 lbs)



HR Series

PURE INSTALL SPEAKERS

The HR Series has been designed to offer the utmost sound quality for installations.

The range consists of 9 different two-way, full-range and 4 subwoofer options, all delivering high output whilst retaining exceptional clarity, efficiency and guaranteeing lower distortion whilst delivering superior reliability and sonic performance.

For greater flexibility, the 12" and 15" full range cabinets are available in 4 different options depending on the coverage pattern and power required for the installation and for sub-bass reinforcement two different dual 18" are also available. The HR-108, HR-206 and HR-208 have different options for coverage angle.

Some cabinets of this series also have the possibility to be manufactured in our Weather-resistant version, ideal for outdoor situations where the cabinets are exposed to the elements.

- ✓ Public address
- ✓ Sound reinforcement
- ✓ Multimedia spaces
- ✓ Club & bar installations
- ✓ Theatres
- ✓ Houses of worship

HR-6



Ultra compact, light and very versatile passive enclosure specially designed for all types of installation projects, both indoors and outdoors. It consists of a 6.5" transducer and a 1" high frequency Mylar tweeter. It offers 119 dB SPL (400 W program). It is an excellent solution for large installation projects or basic installations, with a wide range of accessories for easier installation. Weather-resistant version available.

Components	LF: 1 x 6.5", 2 voice coil HF: 1 x Tweeter 1 – 1.25" aluminium voice coil Mylar diaphragm
Max SPL	116 dB – 122 dB Peak
Frequency response	88 Hz – 18 KHz (± 3dB)
Coverage	90° H x 90° V
Crossover	Passive
Power	200 W (400 W program, 800 W peak)
Nominal impedance	16 Ω
Dimensions	300 x 236 x 220 mm (H x W x D)
Weight	7.5 Kg (17 lbs)

HR-108 (64/96/124)



Passive ultra compact, lightweight and very versatile enclosure especially designed for all types of installation projects. It consists of a 8" transducer and a 1" high frequency compression driver. It offers 125 dB SPL (400 W program). It is an excellent solution for all types of fixed installations and has a complete range of accessories to provide an easier installation. Weather-resistant version available. Different models available depending on the coverage angle: HR-108/64, HR-108/96 and HR-108/124.

Components	LF: 1 x 8" – 2" aluminium voice coil carbon fiber cone HF: 1" Exit compression Driver, 1.75" aluminium voice coil high temperature polymer
Max SPL	122 dB – 128 dB Peak
Frequency response	78 Hz – 20 KHz (± 3dB)
Coverage	60° H x 40° V / 90° H x 60° V / 120° H x 40° V rotatable horn
Crossover	Passive
Power	200 W (400 W program, 800 W peak)
Nominal impedance	8 Ω
Dimensions	420 x 279 x 298 mm (H x W x D)
Weight	10 Kg (22 lbs)

HR-204



The HR-204 enclosure is a high-performance passive full range, with an excellent power-size ratio. It consists of a dual 4" transducer with a 1" tweeter. It offers 121 dB SPL (400 W program).

Components	LF: 2 x 4" (1.3" voice coil) HF: 1 x 1" tweeter
Max SPL	118 dB - 124 dB Peak
Coverage	60° H x 60° V
Power	200 W AES, 400 W program, 800 W Peak
Nominal impedance	16 Ω
Dimensions	370 x 157 x 142 mm (H x W x D)
Weight	3.3 Kg (7.27 lbs)

HR-206 (64/96/124)



The HR-206 enclosure is a high-performance passive full range, with an excellent power-size ratio. It offers a selectable operation between bi-amp or passive mode and is ideal for a wide variety of applications and has several accessories that provide an easier installation. Different models available depending on the coverage angle: HR-206/64, HR-206/96 and HR-206/124.

Components	LF: 2 x 6.5" (2" voice coil) HF: 1" Exit compression Driver, 1.5" aluminium voice coil high temperature polymer
Max SPL	Passive Mode: 117 dB – 122 dB Peak Bi-Amp LF: 119 dB – 125 dB Peak Bi-Amp HF: 128.5 dB – 134.5 dB Peak
Coverage	60° H x 40° V / 90° H x 60° V / 120° H x 40° V rotatable horn
Crossover	Bi-Amp / Passive (Selectable)
Power	Passive mode: 400 W (800 W program, 1600 W Peak) Bi-Amp LF: 400 W (800 W program, 1600 W Peak) Bi-Amp HF: 70 W (140 W program, 280 W Peak)
Dimensions	249 x 568 x 252 mm (H x W x D)
Weight	15 Kg (33 lbs)

HR-208 (64/96/124)



The HR-208 enclosure is a high-performance passive full range, with an excellent power-size ratio. This enclosure offers a selectable operation between bi-amp or passive mode and is ideal for a wide variety of applications. Different models available depending on the coverage angle: HR-208/64,96/124.

Components	LF: 2 x 8" (2" voice coil), carbon fiber cone HF: 1" Exit compression Driver, 1.75" aluminium voice coil
Max SPL	Passive Mode: 120 dB – 126 dB Peak Bi-Amp LF: 120 dB – 126 dB Peak Bi-Amp HF: 131.5 dB – 137.5 dB Peak
Coverage	60° H x 40° V / 90° H x 60° V / 120° H x 40° V rotatable horn
Crossover	Bi-Amp / Passive (Selectable)
Power	Passive mode: 400 W (800 W program, 1600 W Peak) Bi- Amp LF: 400 W (800 W program, 1600 W Peak) Bi-Amp HF: 70 W (140 W program, 280 W Peak)
Dimensions	666 x 279.5 x 298 mm (H x W x D)
Weight	17 Kg (37 lbs)

HR-1264/5 & 1296/5



High performance, ultra-compact, full range, two way bi-amp/passive cabinet. It consists of a 12" transducer and a 1.4" high frequency compression driver. They offer 2 dispersion options. The model HR-1264/7 provides a narrow dispersion of 60° x 40° (rotatable) and the model HR-1296/5 offers a wide dispersion of 90° x 60° (rotatable).

Components	LF: 12", 2.5" voice coil, Malt Cross Cooling System HF: 1.4" Exit compression Driver, 1.75" aluminium voice coil
Max SPL	Passive Mode: 121 dB – 127dB Peak Bi-Amp LF: 124 dB – 130 dB Peak Bi-Amp HF: 126 dB – 132 dB Peak
Coverage	90° x 60° (HR-1296/5) / 60° x 40° (HR-1264/5)
Crossover	Bi-amp / Passive (Selectable)
Power	Passive mode: 500 W (1000 W program, 2000 W Peak) Bi- Amp LF: 500 W (1000 W program, 2000 W Peak) Bi-Amp HF: 60 W (120 W program, 240 W Peak)
Dimensions	705 x 377 x 495 mm (H x W x D)
Weight	25 Kg (55 lbs)

HR-1264/7 & 1296/7



High performance, ultra-compact, full range, two way bi-amp/passive cabinet. It consists of a 12" transducer and a 1.4" high frequency compression driver. They offer 2 dispersion options. The HR-1264/7 provides a narrow dispersion of 60° x 40° (rotatable) and the HR-1296/7 offers a wide dispersion of 90° x 60° (rotatable).

Components	LF: 12" (3,5" voice coil), neodymium magnet HF: 1.4" Exit compression Driver, (2.5" voice coil)
Max SPL	Passive Mode: 123 dB – 129 dB Peak Bi-Amp LF: 125 dB – 131 dB Peak Bi-Amp HF: 127 dB – 133 dB Peak
Coverage	90° x 60° (HR-1296/7) / 60° x 40° (HR-1264/7)
Crossover	Bi-Amp / Passive (Selectable)
Power	Passive mode: 700 W (1400 W program, 2800 W Peak) Bi- Amp LF: 700 W (1400 W program, 2800 W Peak) Bi-Amp HF: 80 W (160 W program, 320 W Peak)
Dimensions	705 x 377 x 495 mm (H x W x D)
Weight	26 Kg (57 lbs)

HR-1564/5 & 1596/5



High performance, ultra-compact, full range, two way bi-amp/passive cabinet. It consists of a 15"transducer and a 1" high frequency compression driver.They offer 2 dispersion options. The model HR-1564/5 provides a narrow dispersion of 60° x 40° (rotatable) and the model HR-1596/5 offers a wide dispersion of 90° x 60° (rotatable).

Components	LF: 15", 2.5" voice coil, Malt Cross Cooling System HF: 1.4" Exit compression Driver, 1.75" aluminium voice coil
Max SPL	Passive Mode: 123 dB – 129 dB Peak Bi-Amp LF: 125 dB – 131 dB Peak Bi-Amp HF: 126 dB – 132 dB Peak
Coverage	Constant directivity horn (Rotatable) 90° x 60° (HR-1596/5) / 60° x 40° (HR-1564/5)
Crossover	Bi-amp / Passive (Selectable)
Power	Passive mode: 500 W (1000 W program, 2000 W Peak) Bi- Amp LF: 500 W (1000 W program, 2000 W Peak) Bi-Amp HF: 60 W (120 W program, 240 W Peak)
Dimensions	790 x 444.5 x 541 mm (H x W x D)
Weight	30 Kg (66 lbs)

HR-1564/7 & 1596/7



High performance, ultra-compact, full range, two way bi-amp/passive cabinet. It consists of a 15" transducer and a 1.4" high frequency compression driver. They offer 2 dispersion options. The HR-1564/7 provides a narrow dispersion of 60° x 40° and the HR-1596/7 offers a wide dispersion of 90° x 60° both rotatable.

Components	LF: 15" (3.5" aluminium voice coil), neodymium magnet HF: 1.4" Exit compression Driver
Max SPL	Passive Mode: 123 dB – 129 dB Peak Bi-Amp LF: 126 dB – 132 dB Peak Bi-Amp HF: 127 dB – 133 dB Peak
Coverage	90° x 60° (HR-1596/7) / 60° x 40° (HR-1564/7)
Crossover	Bi-Amp / Passive (Selectable)
Power	Passive mode: 700 W (1400 W program, 2800 W Peak) Bi-Amp LF: 700 W (1400 W program, 2800 W Peak) Bi-Amp HF: 80 W (160 W program, 320 W Peak)
Dimensions	790 x 444,5 x 541 mm (H x W x D)
Weight	32 Kg (70.5 lbs)

HR-218/36



The HR218/36 is a high performance passive subwoofer with dual 18" low frequency transducers in bass reflex, direct radiation configuration. Designed to work in conjunction with the full range of the HR series, offering a powerful high power boost between 34 and 200 Hz. This enclosure offers an extraordinary power-volume-weight ratio, being a highly versatile sub-system in all types of installation projects.

Components	2 x 18", 4" tetracoil dual voice coil
Max SPL	139 dB – 145 dB Peak
Coverage	Omnidirectional
Crossover	Active
Power	3600 W (7200 W program, 14400 W Peak)
Nominal impedance	4 Ω
Dimensions	585 x 1080 x 781 mm (H x W x D)
Weight	82 Kg (180 lbs)

HR-218/20



The HR218/20 is a high performance passive subwoofer designed to work in conjunction with the full range of the HR series, offering a powerful reinforcement for low frequencies. Medium power, subwoofer cabinet with dual 18" low frequency transducers in bass reflex, direct radiation configuration. This enclosure offers an extraordinary power-volume-weight ratio, being a highly versatile sub-system in all types of installation projects.

Components	2 x 18", 3" copper voice coil
Max SPL	136 dB – 142 dB Peak
Coverage	Omnidirectional
Crossover	Active
Power	2000 W (4000 W program, 8000 W Peak)
Nominal impedance	4 Ω
Dimensions	585 x 1080 x 624 mm (H x W x D)
Weight	68 Kg (150 lbs)

HR-215S



The HR-215S is a high-performance compact subwoofer designed to work with the HR range full range cabinets, offering impressive low-frequency reinforcement with an excellent power-volume-to-weight ratio.

High power, ultra compact, sub-bass cabinet with two 15" low frequency transducers with rubber suspension in triple band-pass configuration.

Components	LF: 2 x 15" transducers
Max SPL	133 dB – 139 dB Peak
Coverage	QUASI Omnidirectional
Crossover	Active
Power	2000 W (4000 W program, 8000 W Peak)
Nominal impedance	4 Ω
Dimensions	644 x 463 x 600 mm (H x W x D)
Weight	59 Kg (130 lbs)

HR-18/10



The HR-18/10 is a compact subwoofer with a great power-volume-weight ratio. This cabinet is designed to work together with the full range units of the HR series, offering significant reinforcement for the low frequencies.

Medium power, subwoofer cabinet with one 18" low frequency in bass reflex, direct radiation configuration.

Components	1 x 18", 3" copper voice coil
Max SPL	129 dB – 135 dB Peak
Coverage	Omnidirectional
Crossover	Active
Power	1000 W (2000 W program, 4000 W Peak)
Nominal impedance	8 Ω
Dimensions	511 x 505 x 681 mm (H x W x D)
Weight	32 Kg (70.5 lbs)



KR Series

PASSIVE CABINETS FOR CLUBS & KTV

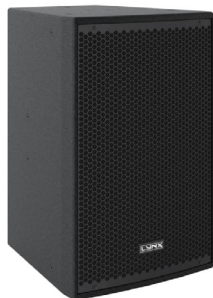
The two full-range models belonging to the KR Series have been specifically designed for installations where high volume is required whilst delivering excellent vocal clarity with low distortion. They are available in two-way passive 10" and 12" versions.

Ideal for a wide range of fixed installation applications, such as KTV rooms, conference halls, houses of worship or multimedia spaces.

The double port located at the rear of the enclosure creates increased bass frequency response. When installed close to a wall, it creates a reflection that extends the low frequency response of the system, creating extra bass boost.

- ✔ KTV rooms
- ✔ Public buildings
- ✔ Houses of worship
- ✔ Conference halls
- ✔ Clubs & bars
- ✔ Sound reinforcement
- ✔ Multi media spaces

KR-12



The KR-12 is a compact, two-way passive cabinet. Consists of a 12" (3" voice coil) LF transducer with total waterproof cone treatment. The 1" HF compression driver delivers excellent sonic quality. It has an exceptional dynamic range and produces even the most complex signals with depth and definition and is mounted on a 90° x 60° rotatable horn.

Components	LF: 12" speaker, 3" (75 mm) copper wire voice coil, waterproof cone with treatment on both sides HF: 1" exit throat (38 mm) voice coil, BMS annular diaphragm driver
Max SPL	124 dB / 130 dB Peak
Coverage	90° x 60° rotatable
Rated power	500 W AES (1000 W program, 2000 W Peak)
Dimensions	600 x 363 x 410 mm (H x W x D)
Weight	24 Kg (52.9 lbs)
Fittings	14 x M8, ergonomic handle on the back position, 4 x M6 U-bracket, 4 x M6 wall bracket, 35 mm top hat

KR-10



The KR-10 is a compact, two-way passive cabinet. Consists of a 10" (2.5" voice coil) LF transducer with waterproof cone. The 1" HF compression driver delivers excellent sonic quality. It has an exceptional dynamic range and produces even the most complex signals with depth and definition and is mounted on a 90° x 60° rotatable horn.

Components	LF: 10" speaker, 2.5" (50 mm) fiber glass former and aluminium winding voice coil, waterproof cone with treatment on both sides HF: 1" exit throat (38 mm) voice coil, BMS annular diaphragm driver
Max SPL	122 dB / 128 dB Peak
Coverage	90° x 60° rotatable
Rated power	300 W AES (600 W program, 1200 W Peak)
Dimensions	550 x 295 x 330 mm (H x W x D)
Weight	16 Kg (35.2 lbs)
Fittings	14 x M8, ergonomic handle on the back position, 4 x M6 U-bracket, 6 x M6 wall bracket, 35 mm top hat

BS Series

BASIC ESSENTIAL EQUIPMENT

The BS series has been designed to offer an affordable yet reliable series of cabinets which not only deliver high performance but have a sleek & attractive design and finish so that they not only sound great but also look impressive in any install.

The series comprises 5 full range cabinets, all designed for a wide range of applications from fixed installations, nightclubs & bars, houses of worship, corporate events, as front fill and as stage monitoring. The series is complemented by two passive subwoofer cabinets designed to extend low frequency support to the five BS series full range cabinets.

The five two-way, passive full range cabinets include a single 5", 8", 10", 12" and 15" and the subwoofers come in single 12" and 18" options with the series offering tremendous sound and clarity over short/mid distances.

Constructed from premium birch plywood and coated in polyurea coating. The enclosures also offer a screw free grille together with a number of dedicated accessories.

Although all these cabinets can be used without a processor, it is strongly recommended that the cabinet presets are applied for maximum optimization and performance.



Club & bar installations



Sound reinforcement



Houses of worship



Theatres



Multimedia spaces



Public address

BS-5



The BS-5 is an ultra-compact, full range, two way passive cabinet for background sound reinforcement. It consists of a 5" transducer and a 1" high frequency dome tweeter. It offers 90° conic dispersion, 107 dB SPL and 160 W program.

Components	LF: 1 x 5" transducer HF: 1 x 1" aluminium dome tweeter
Max SPL	107 dB – 113 dB Peak
Coverage	90° H x 90° V conic
Power	80 W AES, 160 W program, 320 W
Dimensions	278 x 160 x 170 mm (H x W x D)
Weight	3 Kg (6.6lbs)
Fittings	2 x M6 u bracket, 2 x M6 wall bracket

BS-8



The BS-8 is a compact, two-way passive cabinet. Consists of a 8" (2" voice coil) LF transducer and a 1" HF driver mounted on a 90° x 60° rotatable horn offering a wide range of applications from fixed installations, frontfill and as a stage monitor. The cabinet can be complemented by the BS-112 or BS-118 subwoofers and offers tremendous sound and clarity over short/mid distances. The enclosure also offers a screw free grille together with a number of dedicated accessories.

Components	LF: 8" speaker 2" (50 mm), waterproof cone with treatment on both sides HF: 1" exit throat, PETP dome compression driver
Max SPL	118 dB / 124 dB Peak
Coverage	90° x 60° rotatable
Power	300 W AES (600 W program, 1200 W)
Dimensions	456 x 255 x 259 mm (H x W x D)
Weight	12 Kg (26.4 lbs)
Fittings	5 x M8, single pole-mount, ergonomic handle on the back position

BS-10



The BS-10 is a compact, two-way passive cabinet. Consists of a 10" (2" voice coil) LF transducer and a 1" HF driver mounted on a 90° x 60° rotatable horn offering a wide range of applications from fixed installations, frontfill and as a stage monitor. The cabinet can be complemented by the BS-112 or BS-118 subwoofers and offers tremendous sound and clarity over short/mid distances. The enclosure also offers a screw free grille together with a number of dedicated accessories.

Components	LF: 10" speaker, 2" copper wire voice coil, waterproof cone with treatment on both sides HF: 1" exit throat, PETP dome compression driver
Max SPL	119 dB / 125 dB Peak
Coverage	90° x 60° rotatable
Power	300 W AES (600 W program, 1200 W)
Dimensions	505 x 300 x 301 mm (H x W x D)
Weight	14 Kg (30.8 lbs)
Fittings	5 x M8, single pole-mount, ergonomic handle on the back position

BS-12



The BS-12 is a compact, two-way passive cabinet. Consists of a 12" (3" voice coil) LF transducer and a 1" HF driver mounted on a 90° x 60° rotatable horn offering a wide range of applications from fixed installations, frontfill and as a stage monitor. The cabinet can be complemented by the BS-112 or BS-118 subwoofers and offers tremendous sound and clarity over short/mid distances. The enclosure also offers a screw free grille together with a number of dedicated accessories.

Components	LF: 12" speaker, waterproof cone with treatment on both sides HF: 1" exit throat, annular diaphragm driver
Max SPL	122 dB / 128 dB Peak
Coverage	90° x 60° rotatable
Power	400 W AES (800 W program, 1600 W Peak)
Dimensions	589 x 350 x 348 mm (H x W x D)
Weight	19 Kg (41.8 lbs)
Fittings	5 x M8, double pole-mount with 10° angle, ergonomic handle on the back position

BS-15



The BS-15 is a compact, two-way passive cabinet. Consists of a 15" (3" voice coil) LF transducer and a 1" HF driver mounted on a 90° x 60° rotatable horn offering a wide range of applications from fixed installations, frontfill and as a stage monitor. The cabinet can be complemented by the BS-112 or BS-118 subwoofers and offers tremendous sound and clarity over short/mid distances. The enclosure also offers a screw free grille together with a number of dedicated accessories.

Components	LF: 15" speaker, waterproof cone with treatment on both sides HF: 1" exit throat, annular diaphragm driver
Max SPL	124 dB / 130 dB Peak
Coverage	90° x 60° rotatable
Power	400 W AES (800 W program, 1600 W Peak)
Dimensions	664 x 425 x 420 mm (H x W x D)
Weight	24 Kg (52.9 lbs)
Fittings	5 x M8, double pole-mount with 10° angle, ergonomic handle on the back position

BS-112



The BS-112 is a compact, band pass passive subwoofer cabinet designed to extend low frequency support to the five BS Series full range cabinets. The 12" (3" voice coil) driver offers high power handling and high sensitivity with low distortion and ultra low air noise. The cone is waterproof and rubber suspension has been treated on both sides and has been optimized for direct radiation subwoofer applications.

Components	LF: 12" speaker, 3" (75 mm) copper wire voice coil, waterproof cone with treatment on both sides
Max SPL	120 dB / 126 dB Peak
Coverage	QUASI omnidirectional
Power	500 W AES (1000 W program, 2000 W Peak)
Dimensions	406 x 655 x 400 mm (H x W x D)
Weight	29 Kg (63.9 lbs)
Fittings	2 integrated ergonomic handles, 4 rubber feets right side for vertical install, M-10 fly points

BS-118



The BS-118 is a compact, passive subwoofer cabinet designed to extend low frequency support to the four BS Series full range cabinets. The 18" (3" voice coil) driver offers high power handling and high sensitivity with low distortion and ultra low air noise. The cone is waterproof, has been treated on both sides and has been optimized for direct radiation subwoofer applications.

Components	LF: 18" speaker, 3" (75 mm) copper wire voice coil, Waterproof cone with treatment on both sides
Max SPL	126 dB / 132 dB
Coverage	Omnidirectional
Power	600 W AES (1200 W program, 2400 W Peak)
Dimensions	533 x 660 x 570 mm (H x W x D)
Weight	33 Kg (52.9 lbs)
Fittings	2 integrated ergonomic handles, 4 rubber feets right side for vertical install, M-10 fly point



QB Series

BACKGROUND SOUND

The QB series comprises one two-way, passive full range cabinet and one subwoofer and is the smallest series that Lynx Pro Audio offers, designed and intended for background sound reinforcement where the power of the HR or BS series is not required.

The components have been carefully selected to offer a lightweight, versatile series, delivering a linear phase response with excellent sound distribution and fidelity for background installations in bars, restaurants, conferences, etc.

Both cabinets are finished in rugged, premium birch plywood with a polyurea coating.

The QB-5 is protected by front steel grills and backed with a special dark grey triple layer, acoustical textile which allows greater air flow and reduces heat and humidity.

- ✓ Club & bar installations
- ✓ Restaurants
- ✓ Houses of worship
- ✓ Theatres
- ✓ Multimedia spaces
- ✓ Broadcast & conferences

QB-5



The QB-5 is a two-way versatile, ultracompact light weight, passive cabinet offering high-performance for background sound applications.

It features a 5" low/mid transducer with rubber surround and a 1" neodymium tweeter with micro foil diaphragm.

It is made from 9 mm premium birch plywood and coated with water based paint.

Components	LF: 1 x 5" transducer / HF 1 x 1" tweeter
Max SPL	107 dB – 113 dB Peak
Coverage	90° H x 90° V conic
Power	80 W (160 W program)
Crossover	4700 Hz
Dimensions	254 x 167 x 186 mm (H x W x D)
Weight	3 Kg (6.6 lbs)

SUB-08



The SUB-08 is an ultra compact double band pass subwoofer delivering highperformance for background sound applications. It uses one 8" transducer with rubber surround and double independent coil.

The SUB-08 has been designed to be used with the QB-5 to extend the low frequency support.

Components	LF: 1 x 8" transducer (2 x 50 mm voice coil)
Max SPL	118 dB – 124 dB Peak
Coverage	360° single unit
Power	300 W (600 W program)
Impedance	8 Ω
Dimensions	268 x 641 x 304 mm (H x W x D)
Weight	10 Kg (22 lbs)



Ionic Series

SMART & SLIM COLUMN SPEAKERS

Smart & slim column speakers designed for reverberant installations where intelligible, clear voice reproduction is paramount and where a low profile, discreet column is required.

The Ionic range of columns is our solution for lightweight installation column speakers, both portable or permanent applications. It comprises four modular columns, one coaxial cabinet and two subwoofers. Available in a variety of colours/finishes by request.

- ✓ Clubs
- ✓ Public buildings
- ✓ Cruise ships
- ✓ Indoor live events
- ✓ Commercial complex
- ✓ Houses of worship

Ionic- V28



The Ionic-V28 is a two-way passive column speaker part of the Ionic series. This column is oriented to contain high fidelity voice and has more vertical directivity thanks to the waveguide. It is the newest and most powerful column system in the series and it is ideal for indoor installations. Water-based paint available in several colors. Powered from the subwoofer units which include a DSP offering different presets to cover a wide range of sound applications.

Components	Low/mid: 8 x 4" speakers with 1" voice coil High: 1 x 1" exit on waveguide
Max SPL	126 dB – 132 dB Peak
Coverage	25° V x 100° H
Power	560 W (1120 W program, 2240 W Peak)
Dimensions	1004 x 118 x 149 mm (H x W x D)
Weight	12 Kg (26.4 lbs)

Ionic- V24



The Ionic-V24 is a two-way passive column speaker part of the Ionic series. This column is oriented to contain high fidelity voice and has more vertical directivity thanks to the waveguide. It is the newest and most powerful column system in the series and it is ideal for indoor installations. Water-based paint available in several colors.

It is powered from the subwoofer units which include a Digital Signal Processor offering different presets to cover a wide range of sound applications.

Components	Low/mid: 4 x 4" speakers with 1" voice coil High: 1 x 1" exit on waveguide
Max SPL	120 dB – 126 dB Peak
Coverage	25° V x 100° H
Power	230 W (460 W program, 920 W Peak)
Dimensions	586 x 118 x 149 mm (H x W x D)
Weight	7 Kg (15.4 lbs)

Ionic- 100 OD



The Ionic-100OD is a passive stainless steel column speaker part of the Ionic series. It is ideal for outdoor installations, receiving the following treatment to be installed outside: micro perforated aluminium grill with special polyester protection against water, tropicalized speaker treatment with special latex covering and double cabinet sealing. It is powered from the subwoofer units which include a Digital Signal Processor offering different presets to cover a wide range of sound applications.

Components	12 x 3" speaker with 0.75" voice coil
Max SPL	121 dB – 127 dB Peak
Coverage	15° ± 5° V x 100° H
Power	300 W (600 W program, 1200 W Peak)
Dimensions	1000 x 89 x 117 mm (H x W x D)
Weight	13 Kg (29 lbs)

Ionic- 50 OD



The Ionic-50OD is a passive stainless steel column speaker part of the Ionic series. It is ideal for outdoor installations, receiving the same treatment as the Ionic-100OD. Powered from the subwoofer units which include a DSP offering different presets to cover a wide range of sound applications. Weight has been left as low as possible providing easy set ups in fixed installation as well as easy transport for portable applications.

Components	6 x 3" speaker with 0.75" voice coil
Max SPL	119 dB – 125 dB Peak
Coverage	15° ± 5° V x 100° H
Power	150 W (300 W program, 600 W Peak)
Dimensions	502 x 89 x 117 mm (H x W x D)
Weight	4.4 Kg (9.7 lbs)

Ionic- 5CXv



The Ionic-5CXv is a passive coaxial speaker for outdoor use. It features double polyurea coating, aluminium grill, polyester foam protection, glamp connectors and the speakers cones are weatherproof on both sides. The cabinet can be selected as 8Ohm low impedance on high impedance for 100v installations.

Components	1 x 5" coaxial speaker with LF 1.5" and HF 1" voice coil
Max SPL	114 dB – 120 dB Peak
Coverage	70° conical dispersion
Power	150 W AES (300 W program, 600 W Peak)
Operating mode	8 Ω / 100 V: 100 W / 75 W / 50 W selectable
Connectors	In: Euroblock terminal Out: Cable gland
Dimensions	152 x 152 x 221 mm (H x W x D)
Weight	3 Kg (6.6 lbs)

Ionic- 18S



The Ionic-18S is a powered subwoofer enclosure part of the Ionic series. It uses 1 x 18" (3" voice coil) neodymium transducers offering an ultra compact subwoofer enclosure with 132dB SPL. The power module (Class D with switching power supply) includes a DSP which offers different presets to cover a wide range of sound applications complementing the column speakers. Ionic-18S provides quick and easy set ups for both fixed installations and portable applications.

Components	1 x 18" speaker with 3" voice coil
Max SPL	132 dB Peak
Coverage	Omnidirectional
DSP Processing	96 KHz / 64 bit double-precision, DSP with FIR filters
Power	2400W Class D with switching power supply & PFC
Control	User control interface with 2.8" IPS screen
Control connection	Ethernet (OCS) optional / USB (DSP programming)
Dimensions	513 x 505 x 704 mm (H x W x D)
Weight	37 kg (81.5 lbs)

Ionic- 12S



The Ionic-12S is a powered subwoofer enclosure part of the Ionic series. It uses 1 x 12" (3" voice coil) neodymium transducers offering an ultra compact subwoofer enclosure with 127dB SPL. The power module (Class D with switching power supply) includes a DSP which offers different presets to cover a wide range of sound applications complementing the column speakers. Ionic-12S provides quick and easy set ups for both fixed installations and portable applications.

Components	1 x 12" speaker with 3" voice coil
Max SPL	127 dB Peak
Coverage	Omnidirectional
DSP Processing	96 KHz / 64 bit double-precision, DSP with FIR filters
Power	1400 W Class-D with switching power supply & PFC
Control	User control interface with 2.8" IPS screen
Control connection	Ethernet (OCS) optional / USB (DSP programming)
Dimensions	407 x 440 x 520 mm (H x W x D)
Weight	23 kg (50.6 lbs)



WCX Series

WEATHER-RESISTANT COAXIAL CABINET

The WCX Series have been designed to offer the utmost sound quality for indoor and outdoor installations.

These cabinets are weather resistant speakers, designed to withstand harder weather conditions, where the cabinets are exposed to the elements.

Weight has been left as low as possible providing easy set ups in fixed installation as well as easy transport. It can also be powered from an external amplifier using the ARK optimised preset.

The enclosure is made from premium grade birch plywood and finished with a polyurea coating for longer durability & weather protection.

- ✓ PA system
- ✓ Public address
- ✓ Convention centers
- ✓ Houses of worship
- ✓ Background music
- ✓ Commercial complex

WCX- 8



The WCX-8 is a two-way coaxial speaker designed for outdoor applications. Line transformer optional.

This is a weather resistant speaker, designed to withstand harder weather conditions, where the cabinets are exposed to the elements.

The WCX-8 is a two-way coaxial speaker designed for outdoor applications. Line transformer optional.

This is a weather resistant speaker, designed to withstand harder weather conditions, where the cabinets are exposed to the elements.

The WCX-8 has a stainless steel 1 mm grill also available in aluminum with protective layer and micro textured paint and a weatherstrip edging for extreme protection.

This enclosure has an acoustex filter, a hydrophobic polyester sheet to prevent the penetration of water and external elements produced by extreme weather conditions. Also, 35 ppi Acoustic foam to protect against dust particles, M8 stainless steel 316 L screws and a waterproof protected cone on both sides.

An aluminum back plate with pressure gland is included for an extra tight connection and easy installation.

Components	1 x 8" coaxial speaker with LF 2.5" and HF 1.75" voice coil
Max SPL	120 dB – 126 dB Peak
Coverage	70° conical dispersion
Power	300 W AES (600 W program, 1200 W Peak)
Operating mode	8 Ω / Optional 100 V: 200 W / 100 W / 50 W selectable
Connectors	In: Euroblock terminal / Out: Cable gland
Dimensions	265 x 265 x 265 mm (H x W x D)
Weight	10 Kg (22 lbs)



ROX Series

PORTABLE CABINETS

The ROX Series is our answer to multi-purpose, full-range cabinets at affordable pricing.

The series comprises four self-powered, full-range cabinets with integrated FIR Filter DSP, BT connectivity, and a two-channel mixer, now complemented by two powerful active subwoofers for professional low-frequency reinforcement.

Built with durability and portability in mind, the ROX Series is easy to transport, set up, and optimize for live performances, DJ sets, or corporate events. Its lightweight design, combined with a rugged build, makes it the go-to choice for professional sound technicians and event planners seeking reliable, high-quality sound.

- ✓ Installations in nightclubs & bars
- ✓ Large and medium-sized stadiums
- ✓ Live events

RX-8



The RX- 8 is a high-performance polypropylene, 2-way active PA system featuring a 8-inch low-frequency driver. Powered by a Class D amplifier, it delivers 280 W RMS and can reach a peak output of 600 W.

Components	LF: 8", 2" voice coil HF: 1", compression driver
Amplification	Class-D/ DSP FIR Filters
Power	280W RMS / 600W Peak
Frequency Response	65 Hz to 20 kHz
SPL Max	118 dB - 124 dB Peak
Coverage	90°H x 60°V
Inputs	2 balanced Combo Jack/XLR inputs with MIC/LINE selector and adjustment level for each input.1 3.5mm mini-jack AUX input
Outputs	Balanced XLR LINE-level output
Control	LCD Display, encoder and push button
BT	Receiver-TWS Stereo Pairing
Power Supply	230V ~ / 50Hz mains power supply
Dimensions	435 x 245 x 295 mm (H x W x D)
Weight	12 Kg (20.46 lbs)

RX-10



The RX- 10 is a high-performance polypropylene, 2-way active PA system featuring a 10-inch low-frequency driver. Powered by a Class D amplifier, it delivers 280 W RMS and can reach a peak output of 600 W.

Components	LF: 10", 2" voice coil HF: 1", compression driver
Amplification	Class-D/ DSP FIR Filters
Power	280 W RMS / 600 W Peak
Frequency Response	45 Hz to 20 kHz
SPL Max	119 dB - 125 dB Peak
Coverage	90° H x 60° V
Inputs	2 balanced Combo Jack/XLR inputs with MIC/LINE selector and adjustment level for each input.1 3.5mm mini-jack AUX input
Outputs	Balanced XLR LINE-level output
Control	LCD Display, encoder and push button
BT	Receiver-TWS Stereo Pairing
Power Supply	230V ~ / 50Hz mains power supply
Dimensions	545 x 355 x 295 mm (H x W x D)
Weight	15 Kg (33.07 lbs)

RX-12



The ROX-12 is a high-performance polypropylene, 2-way active PA system featuring a 12-inch low-frequency driver. Powered by a Class D amplifier, it delivers 450 W RMS and can reach a peak output of 1000 W.

Components	LF: 12", 3" voice coil HF: 1.35", compression driver
Amplification	Class-D
Power	450W RMS / 1000 W Peak
Frequency Response	45Hz to 20 kHz
SPL Max	125 dB - 131 dB Peak
Coverage	90° H x 60° V
Inputs	2 balanced Combo Jack/XLR inputs with MIC/LINE selector and adjustment level for each input.1 3.5mm mini-jack AUX input
Outputs	Balanced XLR LINE-level output
Control	LCD Display, encoder and push button
BT	Receiver-TWS Stereo Pairing
Power Supply	230V ~ / 50Hz mains power supply
Dimensions	609 x 359 x 346 mm (H x W x D)
Weight	21 Kg (46.30 lbs)

RX-15



The ROX-15 is a high-performance polypropylene, 2-way active PA system featuring a 15-inch low-frequency driver. Powered by a Class D amplifier, it delivers 450 W RMS and can reach a peak output of 1000 W.

Components	LF: 15", 3" voice coil HF: 1.35", compression driver
Amplification	Class-D
Power	450 W RMS / 1000 W Peak
Frequency Response	45 Hz to 20 kHz
SPL Max	125 dB 131 dB Peak
Coverage	90° H x 60° V
Inputs	2 balanced Combo Jack/XLR inputs with MIC/LINE selector and adjustment level for each input.1 3.5mm mini-jack AUX input
Outputs	Balanced XLR LINE-level output
Control	LCD Display, encoder and push button
BT	Receiver-TWS Stereo Pairing
Power Supply	230V ~ / 50Hz mains power supply
Dimensions	696 x 417 x 368 mm (H x W x D)
Weight	23 Kg (50.71 lbs)

RX-S15



The RX-S15 is a high-output, self-powered subwoofer enclosure specially designed to reinforce the low frequencies of the full-range models of the ROX series. Compact and versatile, this unit features a 1200 W Class-D amplifier with a switching power supply. It consists of a 15" (4" voice coil) transducer, delivering a maximum of 132 dB SPL peak.

Components	1 x 15", 4" voice coil
Max SPL	126 dB - 132 dB Peak
Coverage	Omnidirectional
Frequency Response	45 Hz - 250 Hz (- 3dB) Adjustable
Power	1200W Class D with switching power supply
Processing	Analogue
Control	User control interface
Dimensions	500 x 450 x 572 mm (H x W x D)
Weight	33 Kg (72.75 lbs)

RX-S18



The RX-S18 is a high-output, self-powered subwoofer enclosure specially designed to reinforce the low frequencies of the full-range models of the ROX series. It features a 1200 W Class-D amplifier with a switching power supply, offering high performance in a compact format. It consists of an 18" (4" voice coil) transducer, achieving an impressive 134 dB SPL peak.

Components	LF: 1 x 18", 4" voice coil
Max SPL	128 dB - 134 dB Peak
Coverage	Omnidirectional
Frequency Response	35 Hz - 250 Hz (- 3dB) Adjustable
Power	1200W Class D with switching power supply
Processing	Analogue
Control	User control interface
Dimensions	542 x 560 x 780 mm (H x W x D)
Weight	42 Kg (92.59 lbs)

JUNO Series

WEATHER-RESISTANT SPEAKERS FOR INDOORS/OUTDOORS

The Juno Series are weather-resistant, two-way full range loudspeakers. The Juno series comprises one 6" low/mid-woofer with one 1" HF driver (JN-6T) and one 8" low/mid-woofer with one 1" HF driver (JN-8T), both with line transformer as standard.

High durability and superior performance with full sound over a large listening area. These cabinets have a sturdy structure and IP rated system which can be used both indoors and outdoors, being able to withstand the elements. Also, their elegant and discreet design make them the ideal speaker for outdoor installations such as beach clubs, pools, cruise ships and terraces.

Juno series can be set up either vertically or horizontally. The body is made of engineered plastic injection moulding and polypropylene guaranteeing complete protection against ultraviolet rays. The grille is perforated aluminium, internally covered in waterproof fabric and open cell expanded polyurethane.

The system conforms to IP46 international standard. JN-6T and JN8T cabinets are equipped with multitap transformer.

✔ Meeting rooms

✔ Beach clubs

✔ Outdoor background music

✔ Commercial centers

✔ Cruise ships

✔ Waterparks & pools

JN-8T



Weather resistant two-way full range loudspeaker. Consists of one 8" mid-woofer with one 1" HF driver, with a multitap transformer. 122 dB SPL.

High durability and superior performance with full sound over a large listening area. These cabinets have a sturdy structure and IP rated system which can be used both indoors and outdoors, being able to withstand the elements. Black or white versions available.

Components	1×8" (200 mm) / 2" voice coil LF 1×1" (25 mm) / 1" voice coil HF
Max SPL	116 dB / 122 dB Peak
Coverage (-6dB)	90° H x 50° V
RMS Power	150 W
Transformer taps	8 Ω / 100 V: 37.5 W / 75 W / 150 W
Crossover frequencies	2.3 KHz passive
Dimensions	450 x 240 x 287 mm (H x W x D)
Weight	10 Kg (22.05 lbs)

JN-6T



Weather resistant two-way full range loudspeaker. Consists of one 6" mid-woofer with one 1" HF driver, with a multitap transformer. 116 dB SPL.

High durability and superior performance with full sound over a large listening area. These cabinets have a sturdy structure and IP rated system which can be used both indoors and outdoors. Black or white versions available.

Components	1×6" (150 mm) / 1.5" voice coil LF 1×1" (25 mm) / 1" voice coil HF
Max SPL	110 dB / 116 dB Peak
Coverage (-6dB)	90° H x 60° V
RMS Power	80 W
Transformer taps	16 Ω / 100 V: 20W / 40 W / 80 W
Crossover frequencies	2.4 KHz passive
Dimensions	362 x 182 x 232 mm (H x W x D)
Weight	6 Kg (12.23 lbs)



Commercial audio

DESIGNED FOR BACKGROUND MUSIC & VOICE APPLICATIONS

The **IXP series** includes two full-range coaxial speakers with HF compression drivers and a subwoofer to enhance low-frequency response. These speakers are constructed from ABS materials, featuring a frameless, paintable grille for a discreet appearance. Installation is made simple with a 4-pin euroblock terminal with loop-through, a safety wire point, and a cable clamp.

The **CS series** offers a lightweight, versatile option with a two-way coaxial loudspeaker and a subwoofer designed to extend low-frequency performance. This series is ideal for installations in bars, restaurants, museums, airports, and malls, delivering excellent sound fidelity and distribution. The enclosures include damping material in the rear for optimized low-frequency performance. Both series combine robust construction with high-quality sound and ease of installation.

- ✓ Auditoriums, museums
- ✓ Clubs & nightclubs
- ✓ Corporate training rooms
- ✓ Convention centers, exhibit halls
- ✓ Restaurants
- ✓ Malls, airports

IXP-6



The IXP-6 is an in-ceiling loudspeaker delivering great sound performance. It features a 6.5" woofer + 0.75" tweeter with a conical horn. It uses a high quality 100 V / 70 V Line transformer that offers a selection of 50/25/12.5 W (6.25W @ 70 V) delivered to the louspeaker system using high impedance lines or 8 Ω bypass

Components	6.5" 165 mm polypropylene cone + 0.75" tweeter
Max SPL	8 Ω 107 dB - 113 dB 100 V / 70V 107 dB - 113 dB
Nominal coverage	100° Conical Dispersion
Power	50 W (8 Ω) 200 W Peak
Transformer taps	100 V 50 / 25 / 12.5 W - 70 V 50 / 25 / 12.5 / 6.25 W Low Impedance 8 Ω
Crossover frequencies	5500 Hz 12dB/octave HP/LP filter
Signal processing	80 Hz, at 24 dB per octave high pass filter
Dimensions (H x Diameter)	239 mm x 264 mm (9.4 in x 10.3 in)
Weight	3.8 Kg (8.3 lbs)

IXP-4



The IXP-4 is an in-ceiling loudspeaker delivering great sound performance. It features a 4" woofer + 0.75" tweeter with a conical horn. It uses a high quality 100 V / 70 V Line transformer that offers a selection of 30/15/7.5 W (3.75 W @ 70 V) delivered to the louspeaker system using high impedance lines or 8 Ω bypass.

Components	4" 100 mm polypropylene cone
Max SPL	8 Ω 102 dB - 100V / 70V 102 dB
Nominal coverage	100° Conical Dispersion
Power	30 W (8 Ω) 120 W Peak
Transformer taps	100V 30 / 15 / 7.5 / 3.75W - 70V 30 / 15 / 7.5 / 3.75 / 1.9 W Low Impedance 8 Ω
Crossover frequencies	5500 Hz 12dB/octave HP/LP filter
Signal processing	100 Hz, at 24 dB per octave high pass filter
Dimensions (H x Diameter)	188 mm x 204.5 mm (7.4 in x 8 in)
Weight	2.6 Kg (5.7 lbs)

IXP-8SUB



The IXP-8SUB is an in-ceiling loudspeaker subwoofer with a great sound performance. It features a 8" woofer with 80 W AES in a low impedance and it's a loudspeaker designed for extended the low frequency of the IXP ceiling speakers. It uses a 100 V / 70 V Line transformer that offers a selection of 50/25 W (1.9 W @ 70 V) delivered to the louspeaker system using high impedance lines or 8 Ω bypass.

Components	8" 200 mm polypropylene cone
Max SPL	8 Ω 110 dB / 116 dB - 100V / 70V 107 dB / 113 dB
Nominal coverage	180°
Power	30 W (8 Ω) 120 W Peak
Transformer taps	100 V 50 / 25 / 12.5 W - 70 V 50 / 25 / 12.5 / 6.25 W Low Impedance 8 Ω
Crossover frequencies	180 Hz 12 dB / octave HP/LP filter
Signal processing	40 Hz, at 24 dB per octave high pass filter
Dimensions (H x Diameter)	248 mm x 320 mm (9.7 in x 12.5 in)
Weight	5.62 Kg (12.3 lbs)

CS-6T



The CS-6T is an in-ceiling loudspeaker delivering great sound performance. It features a 6" woofer + 0.5" tweeter.

It uses a 100V / 70V Line transformer that offers a selection of 30/15/7.5/3.5 W (1.9 W @ 70 V) delivered to the loudspeaker system using high impedance lines or 8 Ω bypass.

Components	6" 165 mm polypropylene cone + 0.5" polypropylene Tweeter coaxially mounted
Max SPL	8 Ω 105 dB - 100V / 70V 104 dB
Nominal coverage	90° Conical Dispersion
Power	40 W (8 Ω) 160 W Peak
Transformer taps	100 V 30 / 15 / 7.5 / 3.75 W - 70 V 30 / 15 / 7.5 / 3.75 / 1.9 W Low Impedance 8 Ω
Crossover frequencies	2500 Hz
Dimensions (H x Diameter)	139 mm x 239 mm (5,5 in x 9,4 in)
Weight	2 kg (4.4 lbs)

CS-8SUB



The CS-8SUB is an in-ceiling loudspeaker subwoofer with a great sound performance. It features a 8" woofer with 80 W AES in a low impedance and it's a loudspeaker designed for extended the low frequency of the CS ceiling speakers.

It uses a 100 V / 70 V Line transformer that offers a selection of 50/25 W (1.9 W @ 70 V) delivered to the loudspeaker system using high impedance lines or 8 Ω bypass.

Components	8" 200 mm polypropylene cone
Max SPL	8 Ω 109 dB - 100 V / 70V 107 dB
Nominal coverage	180°
Power	80W (8 Ω) 220 W Peak
Transformer taps	100 V 50 / 25 W - 70V 50 / 25 / 12.5 W Low Impedance 8 Ω
Crossover frequencies	150 Hz
Dimensions (H x Diameter)	177 mm x 280 mm (6,9 in x 11 in)
Weight	4 Kg (8.8 lbs)

PROCESSORS

LUKA and ARK



LUKA series is the new series of digital signal processors from Lynx Pro Audio. The series are conformed by the LUKA-224, LUKA-226 and LUKA-228, offering

3 different models with an AES3 input and 2 or 4 analog inputs each and with up to 8 outputs.



The **ARK-70** and **ARK-20** are a series of digital processors designed, assembled and manufactured by Lynx Pro Audio offering 7 different models with 2 or 4

inputs each and with up to 8 outputs (analogue or digital and Ethersound optional).

LUKA PROCESSORS



The LUKA series is the new series of digital signal processors from Lynx Pro Audio, offering 3 different models with AES3 input and 2 or 4 analog inputs each and with up to 8 outputs. The series is made up of LUKA-224, LUKA-226 and LUKA-248.

Managed by remote connection via Ethernet or USB through the OCS control platform, the LUKA series offers high performance for processing sound systems in addition to an intuitive control interface, making work easier for the user.

Designed to work with high-performance systems, the new LUKA processors support an input level of up to +24dBu with a dynamic range of 121dB. The AD converter works with a resolution of 32 bit at 48 kHz.

The DSP works with a double precision resolution reaching 64 bits, improving the resolution of the internal processing calculations.

The LUKA series incorporates latest generation FIR linear phase processing systems with up to 1000 taps selectable per output channel, it also offers the user the possibility of processing the phase separately thanks to an advanced phase equalization algorithm. It has an advanced auto-equalization system that allows you to modify the final response from an imported response curve so that it behaves like a predetermined response, such as a flat response or as the user selects. It can even copy the response of a specific speaker, being able to modify both the magnitude and the phase. In addition, the LUKA series incorporates standard processing systems in all its operating modes.

With Double Dynamics in all 3 models, the LUKA series uses an RMS limiter to adjust the reproduction level of the transducers, maintaining the original dynamics while respecting the original transients, achieving a better acoustic result. A Peak Limiter controls the movement of the speaker, protecting it from damage while reducing distortion caused by over-excitation.

There is an input matrix with 3 operating modes, simple, basic and advanced routing, the latter having being able to act as a mixer.

All inputs have a priority backup system offering the user the programming of different options for different applications.

There is a storage capacity for presets (snapshot, user memories and system presets) with a capacity of up to 999 presets.

LUKA PROCESSORS



LUKA series is the new series of digital signal processors from Lynx Pro Audio. The series are conformed by the LUKA-224, LUKA-226 and LUKA-248.

The LUKA series are the latest in the series of digital processors designed, assembled and manufactured by Lynx Pro Audio offering 3 different models with a AES3 input and 2 or 4 analog inputs each and with up to 8 outputs.

General	
Power supply	85-240 V ~ 40-400 Hz. IEC connector. (Switching power supply, wide range)
Consumption	20 W
Operating temperature	-5° to 60° C (23° to 140° F).
Storage temperature	-60° to 75° C (-76° to 167° F).
Humidity	Max. 90% non-condensing.
Dimensions	483 x 45 x 200 mm
Weight	3 Kg
Communication	
UBS and Ethernet	
Input	
Impedance	2 or 4 analogic + digital AES3 2 channel
Connector	10 K Ohm Balanced (5 K Ohm unbalanced)
AD converter	Balanced XLR (pin 2 +)
Dynamic Range	32 bit-768 KHz Sigma-Delta, 512x Oversampling
Max. level	121 dB
Digital AES3	+24 dBu
Audio	
Frequency range	2 channel up to 24 bits 192 KHz
DSP process	Frequency range
Converters	10 Hz - 24 KHz
Propagation Delay	Internal resolution with 64 bit double precision (48 KHz)
Input Matrix	
Input Routing matrix Analog/AES3. Configurable backup inputs.	
Crossover	
Linkwitz Riley with 12, 24, 48 dB/oct. Butterworth and Bessel with 6, 12, 18, 24, 30, 36, 42 and 48 dB/oct.	
RMS Limiter- Compressor	
Thershold	1 per output.
Compression Ratio	In Watts
Power indication	1:1 to 1:10 (1: infinite with limiter).
Peak Limiter	
Threshold	Shows the maximum power applied to the speaker.
Peak Indication	1 per output In Volts Shows the maximum peak Voltage applied to the speaker for the selected threshold.

Front Panel	
Display	IPS 320 x 170 mm colour + joystick encoder + up to 12 buttons for Edition and Mute, with light indications.
Level meter	Input: LED signal + Over Limit. Output: LED signal + Compression.
Latency	
1.17 ms	
Output	
Impedance	4 / 6 / 8
Connector	200 K Ohm Balanced (100 K Ohm unbalanced)
DA converter	Balanced XLR (pin 2 +)
Dynamic Range	32 bit-768 KHz
Max. level	120 dB
Equalisation	
User EQ:	+24 dBu (balanced)
Mode EQ:	High-Pass1 + 10 Parametric2
Out EQ:	High-Pass / Low-Pass1 + 10 Parametric2
PEQ Type filters 2	
Parametric, Shelving High, Shelving Low, Low-Pass, High-Pass, Low-Pass Q variable, High-Pass Q variable, BandPass, Reject Band, AllPass order 1, AllPass order 2.	
Delay	
Input / output: up to 206 ms (70 m)	
Other functions	
Control by OCS software:	
-Atmospheric compensation	
- Copy / paste function.	
- Speaker data import from main audio measurement systems.	
- Export & Import EQ files, etc.	
- Control groups	
- Smaart Link	

ARK PROCESSORS



Digital processors designed, assembled and manufactured by Lynx Pro Audio to be easily configured providing optimum sound and results in both fixed installation and touring. Digital processors offering 7 different models with 2 or 4 inputs each and with up to 8 outputs (analogue or digital and Ethersound optional).

Double Dynamics (RMS and Peak) are standard in all ARK-20 models. These double dynamics lower levels of distortion and provide protection for all the speaker components and internal electronics.

With 0.67ms fixed latency the ARK-70 is one of the lowest latency processors available. All ARK units deliver a wide dynamic range of 120 dB, high performance Cirrus Logic AD & DA 24 bit converters running at 96 KHz.

Each input has up to 29 filters of Parametric EQ which can be switched to Graphic EQ. Each output also has Parametric EQ which can be chosen between adaptable or constant Q, All Pass, Band Pass, Notch, HP Q, LP Q or High and low Shelvs providing flexibility. Moreover, crossover filters with high and low cuts of Linkwitz Riley, Bessel, Butterworth up to 48 dB/oct slopes in 6 dB steps are available.

ARK software has been designed for fast user access to make each processing zone simpler for the user. The Compare function option enables the user to listen to the difference between 2 complete set ups in real time with no fade-ins or fade-outs.

As well as being able to import measurement curves from the principal systems (SMAART LIVE, CLIO, SAT Live, etc), they can also be seen directly in the final frequency response window showing the effects of the process applied. All ARK processors can be configured and monitored in real time by USB or ETHERNET.

ARK software has been designed for fast user access to make each processing zone simpler for the user. The Compare function option enables the user to listen to the difference between 2 complete set ups in real time with no fade-ins or fade-outs.

As well as being able to import measurement curves from the principal systems (SMAART LIVE, CLIO, SAT Live etc), they can also be seen directly in the final frequency response window showing the effects of the process applied. All ARK processors can be configured and monitored in real time by USB or ETHERNET.

The ARK-70 offer atmospheric compensation – essential when working outdoors where temperature and humidity varies considerably between night and day causing noticeable loss in high frequency, especially at long distances. Each output can be configured separately depending on the throw required from each cabinet.

Other features include polarity, gain and delay on ins and outs, routing of any input to any output and a signal generator with sine and noise (pink or white).

ARK PROCESSORS



	ARK-70	ARK-20
PEQ IN filters (per way)	29 GEQ or PEQ	29 GEQ
PEQ OUT filters (per way)	9	9
Crossover	Up to 48 dB/ oct	
Input Delay (meters)	70	20
Output Delay (meters)	7	
Peak limiter (per output)	Yes	-
Atmospheric compensation	Yes	-
Noise Gate	Yes	Yes
Gain	Yes	Yes
Phase inversion	Yes	Yes
Ethernet	Yes	Optional
USB	Yes	Yes
Security options	Global Password, 4 Security Levels, Restricted zones per Preset	
Export & Import EQ Files	Yes	Yes
Digital AES/EBU	Optional	-
Dynamic Range AD/DA	120 dB	
Latency	0.67 ms	
DSP internal process	56 bit	
Display LCD	24 x 2 characters	
Encoders	3	1 with push button
Navigation buttons	5	-
Dimensions W x H x D (mm) W x H x D (inches)	482 x 45 x 226 18.9 x 1.7 x 8.8	
Weight	3 Kg / 6.6 lbs	

AMPLIFIERS



GTX series are 4-channels high power level amplifiers designed to the rough requirements of the touring market. It is remarkable their high efficiency.

These amplifiers have been equipped with a high quality 64 bit double-precision 96 kHz FIR-DSP and a large IPS display, capacitive touch panel user interface. Optional Dante™ Networking (AES67) and AES3 Digital inputs are available.



The **MP series** consists of high-output Class D amplifiers with a switching-mode power supply and PFC, designed for professional 2 and 4-channel installation and live applications. Developed for use with a wide range of high-performance loudspeakers, these units offer an exceptional power-to-size ratio, allowing for complete system configurations with only two amplifier models.



The **MH series** incorporates the second generation of high-efficiency Class H circuits. This series include two-channel amplifiers (MH-2) and four-channel amplifiers (MH-4), offering a wide power range and flexibility to match various speaker systems.



The **SBA series** has been designed with the aim of offering the proper and more reliable amp to users of very big subwoofers with no concessions. Their output performances (270V/70A) are more than needed to push your subs as far as their maximum limits accept.

With Subamp series you make sure that you will get the maximum output performances of your subwoofers.



TS series is a dynamic range of 100 V 4-channel mid/high power level amplifiers meticulously designed to meet the demands of the installation market. Both, high and low impedance loads can be connected, through their input and output Phoenix connectors and output level controlled via potentiometers on the rear panel.



The cost-effective **RS series** amplifiers are designed for professionals who demand quality, reliability and value.

RS amplifiers represent the best compromise between economy and performances, taking advantage of latest improvements in electronic assembly.

GTX Amplifiers



GTX Series are 4-channels high power level amplifiers designed to the rough requirements of the touring market. It is remarkable their high efficiency.

These amplifiers have been equipped with a high quality 64 bit double-precision 96kHz FIR-DSP and a large IPS display, capacitive touch panel user interface.

In the design it has been implemented the advanced Audio Power Control Management to configure through the DSP how to sharing the power between the channels according to the user needs, having the possibility to obtain in just one channel the maximum power.

Optional Dante™ Networking (AES67) and AES3 Digital inputs are available for GTX amplifiers.



	GTX-5K	GTX-10K	GTX-14K	GTX-20K
Output Power				
@ 2 Ohms	4 x 1250 W	4 x 2500 W	4 x 3500 W	4 x 5000 W
@ 4 Ohms	4 x 1250 W	4 x 2500 W	4 x 3500 W	4 x 5000 W
@ 8 Ohms	4 x 1250 W	4 x 1250 W	4 x 1800 W	4 x 2500 W
Bridge @ 4 Ohms	2 x 2500 W	2 x 5000 W	-	-
Bridge @ 8 Ohms	2 x 2500 W	2 x 5000 W	-	-
Hi-Z 100V	4 x 1250 W / 1 x 2500 W	4 x 2500 W / 1 x 2500 W	4 x 3500 W / 1 x 4200 W	4 x 5000 W / 1 x 5000 W
Hi-Z 70V	4 x 1250 W / 1 x 1800 W	4 x 2500 W / 1 x 2500 W	4 x 2950 W / 1 x 2950 W	4 x 3500 W / 1 x 3500 W
Frequency range	10Hz - 20000Hz +/- 1 dB @ 8 Ohm			
Max output voltage	150 V peak	150 V peak	189 V peak	235 V peak
Max output current	36 A peak	50 A peak	59 A peak	71 A peak
Total harmonic distortion	< 0.05%			
Crosstalk (20 Hz-1 KHz) typical	>70 dB			
Voltage Gain	26 dB to 44 dB			
SNR	111 dBA	111 dBA	113 dBA	115 dBA
Gain	35 dB			
Required AC Mains				
Operating Voltage (50 - 60 Hz)	90V -265V AC	90V -265V AC	170V-265V AC	90V -265V AC
Power on Idling (@230V)	3.7 A	7.3 A	0.5 A	14 A
1/8 Rated Power (@4 Ohm)			16 A	
Dimensions	483 x 89 x 355			
W x H x D (mm)	19 x 3.5 x 14			
W x H x D (inches)				
Weight	7 Kg / 15.4 lbs	7 Kg / 15.4 lbs	9 Kg / 19.8 lbs	9 Kg / 19.8 lbs

MP Amplifiers



The MP series are Class D amplifiers with a switching-mode power supply and PFC, designed for professional 2- and 4-channel installation and live applications.

Developed for use with a wide range of high-performance loudspeakers, the MP series, thanks to its high power output, allows for

complete system configurations, offering versatility using only two amplifier models.

Thanks to its power factor correction system, it offers extremely low mains consumption and a wide operating range.

	MP2-9000	MP4-10000
Output Power @ 2 Ohms @ 4 Ohms @ 8 Ohms Bridge @ 4 Ohms Bridge @ 8 Ohms	2 x 4500 W 2 x 4500 W 2 x 3000 W 1 x 9000 W 1 x 6000 W	4 x 2500 W 4 x 2500 W 4 x 1500 W 2 x 5000 W 2 x 3000 W
Frequency Range +/- 1 dB @ 8 Ohm	20 Hz - 20 KHz	
Total harmonic distortion @ 8Ω 1KHz	<0.5%	
Crosstalk 20 Hz - 1 KHz	>70 dB	
Signal to Noise Ratio 20Hz-20KHz	>110 dBA	
Gain	32 dB to 41 dB	
Input Impedance	20KΩ	
Damping factor	>5000	
Required AC Mains Operating Voltage 50Hz-60Hz	100V -260V AC	
Rated Power Comp. 230V, @4 Ohm	2500 W	2000 W
Dimensions W x H x D (mm)	483 x 482 x 45	483 x 482 x 45
Weight	13,2 Kg / 29,10 lbs	
Protections	Short-circuit, Auto limit, Over load, AC/DC protection	

MH Amplifiers



This MH amplifier become a working tool of great value, providing the user with the best solutions in the market with the highest level of accuracy and a host of features for the professional.

The MH series incorporates the second generation of high-efficiency Class H circuits. This series include two-channel amplifiers (MH-2) and four-channel amplifiers (MH-4), offering a wide power range and flexibility to match various speaker systems.

It features a 2.4-inch display that allows real-time monitoring of the amplifier's status. The optimised design ensures a higher signal-to-noise ratio, meeting the requirements of high-standard projects.

Additionally, it includes multiple protection systems against distortion of less than 0.5%, short circuits, voltage extremes, overload, overheating, and DC, ensuring natural and reliable sound.

	MH2- 1500	MH2- 3200	MH4- 4000	MH4- 5200
Output Power				
@ 2 Ohms	2 x 900 W	2 x 2200 W	4 x 1300 W	4 x 1600 W
@ 4 Ohms	2 x 750 W	2 x 1600 W	4 x 1000 W	4 x 1300 W
@ 8 Ohms	2 x 600 W	2 x 1000 W	4 x 800 W	4 x 1000 W
Bridge @ 4 Ohms	1 x 1800 W	1 x 4400 W	2 x 2600 W	2 x 3200 W
Bridge @ 8 Ohms	1 x 1500 W	1 x 3200 W	2 x 2000 W	2 x 2600 W
Frequency Response	20 Hz - 20 KHz			
Bandwidth ± 0.25 dB				
Phase response	± 15 deg			
1 W 20Hz-20KHz				
Total harmonic distortion	<0.05%			
20 Hz-20 KHz				
Damping factor	>700			
20-500 Hz @8 Ω				
Crosstalk 20 Hz - 1 KHz	>75 dB			
Sensitivity	0.775V / 1.0V / 1.44V	0.775V / 1.0V / 1.44V	0.775V / 1.0V / 1.44V	0.775V / 1.0V / 1.44V
Rated power				
Signal to Noise Ratio	>100dB			
Operating Voltage (50-60 Hz)	230V AC 50 Hz / 60 Hz			
Dimensions	483 x 88 x 430/400		483 x 88 x 500/470	
W x H x D (mm)				
Weight	15,7 Kg	19,5 Kg	24,8 Kg	25,5 Kg
Protections	Soft-start, Mute transient on/off, Overheating, DC, RF, Short circuit, Power overload			

SBA Amplifiers



The SBA series has been designed with the aim of offering the proper and more reliable amp to users of very big subwoofers with no concessions. Their output performances (270V/70A) are more than needed to push your subs as far as their maximum limits accept.

These 2-channels devices are based on the field proven Quanta Pulse™ Technology with an oversized dual high capacity regulated power supply with PFC to deliver their full performances independently of mains status, and an also oversized high efficiency audio power stage, forced front to back cooling through a component-free path with removable front panel dust filters, improved rugged mechanical design with even weight distribution. With Subamp series you make sure that you will get the maximum output performances of your subwoofers.

	SBA-12000	SBA-12004	SBA-18000
Output Power			
@ 4 Ohms	2 x 6000 W	4 x 2950 W	2 x 9000 W
@ 8 Ohms	2 x 3000 W	4 x 1550 W	2 x 4500 W
Bridge @ 8 Ohms	-	2 x 5900 W	-
Frequency Response	20 Hz - 20 KHz	20 Hz - 20 KHz	20 Hz - 20 KHz
Power Bandwidth ± 0.25 dB			
Total Harmonic Distorsion			
20 Hz - 20 KHz	< 0.05%	< 0.05%	< 0.05%
Intermodulation Distorsion			
SMPTE	< 0.05%	< 0.05%	< 0.05%
Damping factor			
20-500Hz @ 8 Ohms	>500	>500	>500
Crosstalk			
20 Hz - 1 KHz, typical	>70 dB	>70 dB	>70 dB
Voltage Gain			
Selectable	32 / 38 / 44 dB	32 / 38 / 44 dB	32 / 38 / 44 dB
Sensitivity			
Rated Power (32/38/44 dB Gain)	3.9/1.9/1 V	2.8/1.4/0.7V	4.7/2.4/1.2V
Signal to Noise Radio			
20Hz-20KHz	116 dB	116 dB	116 dB
Required AC Mains			
Operating Voltage (50 - 60 Hz)	90V-265V AC	90V-265V AC	170V-265V AC
Power on Idling (@230V)	0.5 A	0.5 A	0.5 A
1/8 Rated Power (@4 Ohm)	14 A	13 A	16 A
Dimensions			
W x H x D (mm)	483 x 88.9 x 460	483 x 88.9 x 460	483 x 88.9 x 460
W x H x D (inches)	19 x 3.5 x 18.1	19 x 3.5 x 18.1	19 x 3.5 x 18.1
Weight	12 Kg / 26.5 lbs	12 Kg / 26.5 lbs	12 Kg / 26.5 lbs
Protections	Soft-start, Turn-on Turn-off transients, Over-heating, DC, RF, Short-circuit, Open or mismatched loads, ICL™, PMS™ and SSP™		

TS Amplifiers



TS Series is a dynamic range of 100 V 4-channel mid/high power level amplifiers meticulously designed to meet the demands of the installation market. Both, high and low impedance loads can be connected, through their input and output Phoenix connectors and output level controlled via potentiometers on the rear panel.

These amplifiers have multiple configuration possibilities such as bridge mode, subsonic filter, channel power limiter and signal link among others, in order to meet the needs of any installation. These devices also can be equipped with a GPIO connection to communicate with a third party control system. With all these configurations TS amplifiers can meet the power requirements of any installation from 300 up to 2500 W.

Optional Dante™ Networking.



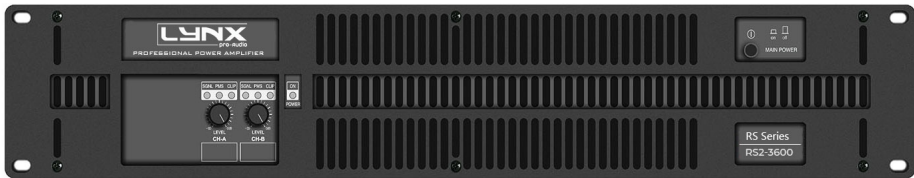
	TS-2500	TS-5000	TS-10000
Number of channels	4	4	4
Total output power	2500 W	5000 W	10000 W
Output power			
@ 2 Ohms	4 x 312 / 1 x 312 W	4 x 1250 / 1 x 1250 W	4 x 2500 / 1 x 2500 W
@ 2.67 Ohms	4 x 430 / 1 x 430 W	4 x 1250 / 1 x 1700 W	4 x 2500 / 1 x 3330 W
@ 4 Ohms	4 x 625 / 1 x 625 W	4 x 1250 / 1 x 2500 W	4 x 2500 / 1 x 2500 W
@ 8 Ohms	4 x 625 / 1 x 1250 W	4 x 1250 / 1 x 1250 W	4 x 1250 / 1 x 1300 W
@ 4 Ohms Bridged	2 x 625 W	2 x 5000 W	2 x 5000 W
@ 8 Ohms Bridged	2 x 1250 W	2 x 5000 W	2 x 5000 W
Hi-Z 100 V	4 x 625 / 1 x 1250 W	4 x 1250 / 1 x 2500 W	4 x 2500 / 1 x 2500 W
Hi-Z 70 V	4 x 625 / 1 x 900 W	4 x 1250 / 1 x 1800 W	4 x 2500 / 1 x 2500 W
Max output voltage	150 V peak	150 V peak	150 V peak
Max output current	18 A peak	36 A peak	50 A peak
Total Harmonic Distortion	<0.05%		
Crosstalk/ 2 KHz-1KHz, typical	>70 dB		
Voltage Gain	26 dB to 44 dB		
SNR	100 V-240 V AC, 50 Hz-60 Hz (Operating: 90V-265V AC)		
Required AC Mains	2.1 A / 420 W	3.7 A / 840 W	7.3 A / 1680 W
Operating Voltage (50 Hz - 60 Hz)	3.6 A / 783 W	7.2 A / 1556 W	314.3A / 3132 W
1/8 Rated Power (@230V, 4 Ohms)	0.7 A / 85 W	0.7 A / 85 W	0.7 A / 85 W
Thermal Dissipation (1/8 rated power 4ohm)	328 BTU/h	655 BTU/h	1310 BTU/h
Dimensions	483 x 89 x 342 mm / 19 x 3.5 x 13.5 in		
W x H x D (mm) (inches)			
Weight	7 Kg - 15.4 lbs		
Protections	Soft-start, Turn-on Turn-off transients, Over-heating, DC, RF, Short-circuit, Open or mismatched loads, ICL™, PMS™ and SSP™		

*IEC filtered pink noise signal (40Hz-5kHz, 12dB crest factor).

RS Amplifiers

The cost-effective RS Series amplifiers are designed for professionals who demand quality, reliability and value. RS amplifiers represent the best compromise between economy and performances, taking advantage of latest improvements in electronic assembly.

RS2 Series



	RS2-1000	RS2-1500	RS2-2000	RS2-3600
Output Power				
@ 2 Ohms	2 x 500 W	2 x 750 W	2 x 1000 W	2 x 1800 W
@ 4 Ohms	2 x 400 W	2 x 700 W	2 x 1000 W	2 x 1750 W
@ 8 Ohms	2 x 240 W	2 x 450 W	2 x 650 W	2 x 950 W
Bridge @ 4 Ohms	1000 W	1500 W	2000 W	3600 W
Bridge @ 8 Ohms	800 W	1400 W	2000 W	3500 W
Frequency Response	20 Hz - 20 KHz			
Phase response	±15 deg			
Total harmonic distortion	<0.05%			
Intermodulation Distortion SMPTE	<0.05%			
Damping factor 20-500 Hz @8Ω	>500			
Crosstalk 20Hz - 1KHz	>75 dB			
Gain	35 dB			
Sensitivity				
Rated Power (26/32/38dB Gain)	0.8 V	1.1 V	1.3 V	1.6 V
Signal to Noise Ratio	101 dBA	103 dBA	104 dBA	105 dBA
Operating Voltage (50-60Hz) Power on Idling (@ 230V) 1/8 Rated Power (@ 4 Ohm)	170V -265V AC 0.5 A 3.5 A	70V-265V AC 0.5 A 4 A	170V -265V AC 0.5 A 5 A	170V -265V AC 0.5 A 10 A
Dimensions W x H x D (mm) W x H x D (inches)	483 x 88.9 x 254 19 x 3.5 x 10			
Weight	5 Kg / 11 lbs	5 Kg / 11 lbs	6 Kg / 13 lbs	6 Kg / 13 lbs
Protections	Soft-start, Turn-on Turn-off transients, Over-heating, DC, RF, Short-circuit, Open or mismatched loads, ICL™, PMS™ and SSP™			

RS Amplifiers

RS4 Series



	RS4-2000	RS4-4000	RS4-6000	RS4-10000
Output Power				
@ 2 Ohms	4 x 500 W	4 x 500 W	4 x 1450 W	4 x 2500 W
@ 4 Ohms	4 x 400 W	4 x 400 W	4 x 1500 W	4 x 2500 W
@ 8 Ohms	4 x 220 W	4 x 220 W	4 x 1100 W	4 x 1400 W
Bridge @ 4 Ohms	2 x 1000 W	2 x 1000 W	2 x 2900 W	2 x 5000 W
Bridge @ 8 Ohms	2 x 800 W	2 x 800 W	2 x 3000 W	2 x 5000 W
High Z				
70V RMS / 100V Peak	2 x 900 W	2 x 900 W	4 x 1500 W	-
100V RMS / 140V Peak	-	-	4 x 800 W	-
Frequency Response	20 Hz - 20 KHz			
Phase response	>500			
Total harmonic distortion	<0.05%			
Intermodulation Distortion SMPTE	<0.05%			
Damping factor 20-500 Hz @8Ω	>500			
Crosstalk 20Hz - 1KHz	>75 dB			
Gain	35 dB	35 dB	26 - 40 dB	26 - 40 dB
Sensitivity				
Rated Power (26/32/38dB Gain)	0.8 V	1.3 V	4.7 to 0.9 V	5.3 - 1.1 V
Signal to Noise Ratio	101 dBA	104 dBA	106 dBA	107.5 dBA
Operating Voltage (50-60Hz)	170V -265V AC/ 90V - 140V AC	170V -265V AC/ 90V - 140V AC	170V -265V AC/ 90V - 140V AC	170V -265V AC/ 90V - 140V AC
Power on Idling (@ 230V)	0.5 A	0.5 A	0.5 A	0.5 A
1/8 Rated Power (@ 4 Ohm)	7 A	10 A	15 A	16 A
Dimensions				
W x H x D (mm)	483 x 88.9 x 254		483 x 89 x 320	483 x 88.9 x 274
W x H x D (inches)			19 x 3.5 x 12.6	19 x 3.5 x 10.8
Weight	6.5 Kg / 14.3 lbs	5 Kg / 11 lbs	6 Kg / 13 lbs	6 Kg / 13 lbs
Protections	Soft-start, Turn-on Turn-off transients, Over-heating, DC, RF, Short-circuit, Open or mismatched loads, ICL™, PMS™ and SSP™			

SOFTWARE



Rainbow 3D

Rainbow 3D is an electro-acoustical prediction software for loudspeaker systems, boasting comprehensive high-speed simulation in a three-dimensional environment. With a sophisticated design, Rainbow 3D stands out for its speed, being able to do a simulation in a few seconds.

Thanks to this software you will be able to “virtually” determine the acoustical response of one or various cabinets at the same time.



Online Control System

Control and monitoring software for multiple devices (loudspeakers, amplifiers and processors). Allows control via Ethernet / USB for Lynx Pro Audio systems with integrated DSP.



ARK Software

The ARK software works via USB or Ethernet (cable or wireless) and is the interface to configure all the parameters of the range of processors ARK-70 and ARK-20 series.

The ARK software has been completely designed by Lynx Pro Audio engineers. It allows to configure every one of the parameters in the processor, being in “real time” or “offline”, storing them in the processor via the USB interface or Ethernet.



Cabinet Updater

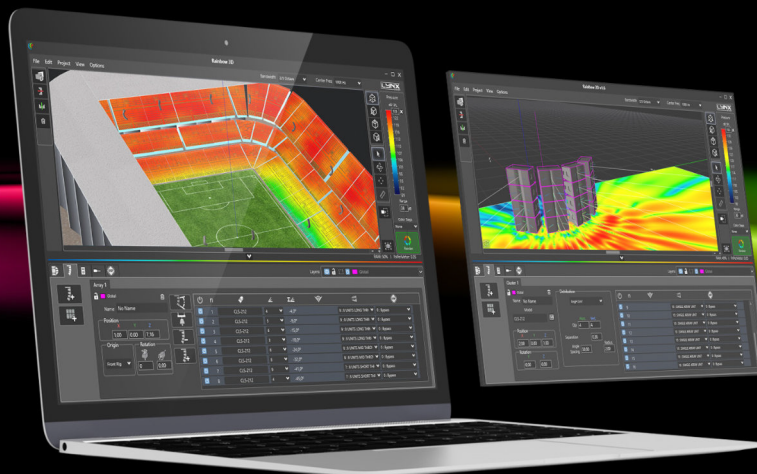
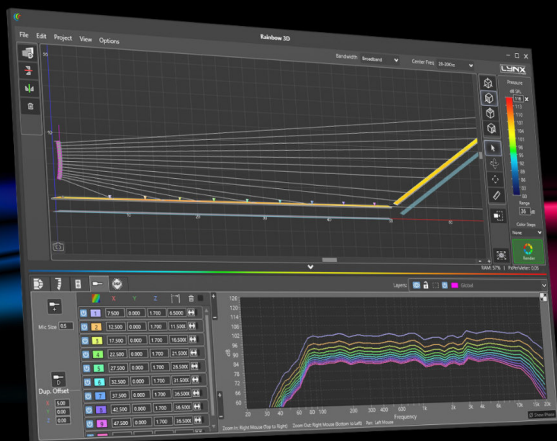
Cabinet Updater is a software that updates the presets of your powered cabinets. Just connect the cabinet by USB to your PC. This software will automatically detect your cabinet hardware and update the presets to the latest and optimum configuration available.

RAINBOW 3D

Electroacoustical Prediction Software

Rainbow 3D is an electro-acoustical prediction software for loudspeaker systems, boasting comprehensive high-speed simulation in a three-dimensional environment. With a sophisticated design, Rainbow 3D stands out for its speed, being able to do a simulation in a few seconds.

Being a technology that has been developed in-house by our engineers, we are able to adapt to the needs of our clients, make improvements when necessary and develop new tools. Rainbow 3D is an ongoing project that will be constantly adding new features.



RAINBOW 3D

• Designed from scratch by professionals

Rainbow 3D is an electro-acoustical prediction software for loudspeaker systems, boasting comprehensive high-speed simulation in a three-dimensional environment. With a sophisticated design, Rainbow 3D stands out for its speed, being able to do a simulation in a few seconds.

Being a technology that has been developed in-house by our engineers, we are able to adapt to the needs of our clients, make improvements when necessary and develop new tools. Rainbow 3D is an ongoing project that will be constantly adding new features.

• Complex-shaped surfaces

Despite the existence of the previous Rainbow 2D, this new software has been coded from scratch by our engineers in order to achieve an ultra-fast simulation and to create a visually rich 3D environment. The simulation takes advantage of all cores in the computer using multi-threading techniques for optimised calculation speed.

The program can simulate all Lynx Pro Audio's acoustic enclosures located in a 3D space. New spherical measurements of the loudspeakers have been performed, with up to one degree of accuracy, in the recently built anechoic chamber.

• Blueprints, textures and ornaments

The program can simulate all Lynx Pro Audio's acoustic enclosures located in a 3D space, including the classic side and top views. It can also define multiple listening zones and allows offset positioning and symmetry.

You can create complex-shaped surfaces as listening zones (venues): trapezoidal forms, semicircles, circles, rectangles and other asymmetrical forms. Each corner in a 4-vertex surface is independently definable as straight or round.

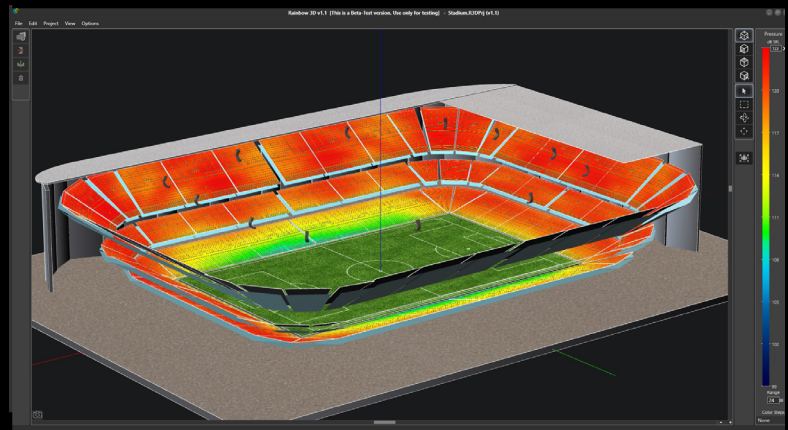
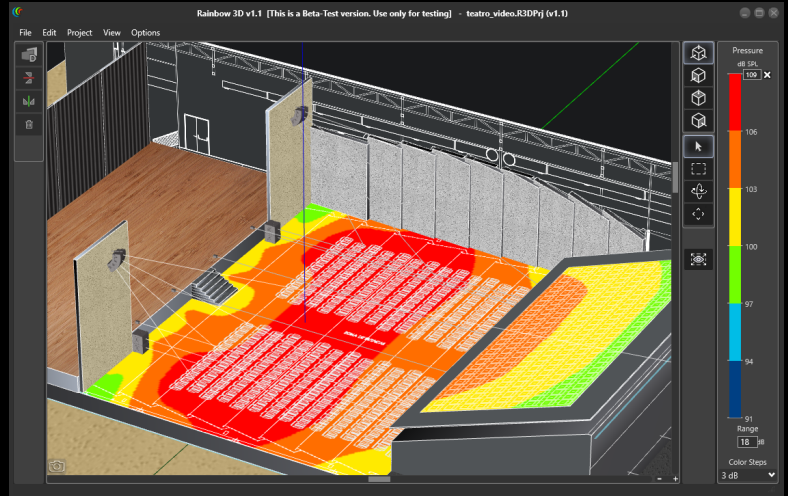
• Create projects with endless zones

Blueprints can be loaded and used as a reference point or template on which reproduce the venue more closely to reality.

Furthermore, you can add textures and ornaments (decorative 3D objects) that you will find in the library to make the project more realistic and visually appealing.

• Create projects with endless zones

You can create customized designs using multiple edition and productivity tools: create surfaces, duplicate, apply symmetry on X and Y, show/hide surfaces, change dimensions, change position, change rotation, take screenshots, etc.



RAINBOW 3D

• Unlimited sound sources

Allows the acoustic simulation for an unlimited number of sound sources and audio systems.

You can place as many systems (subwoofers, line arrays, columns and individual cabinets) as you desire or you can create your own group of customized sound systems.

Line arrays can be placed in stack or flown configuration. Also, you can create clusters from any individual cabinet available in the library.

• Create your own “Sound Systems”

You can select different models of cabinets from the library, create a group with the desired configuration and save them as a sound system. In this way, you can create a group of customized sound systems with your own configurations and reuse them in other projects, saving time.

To make this possible, you will need to create a “.system” file. This can be integrated upon other projects with the “Load sound system from file” option or you can import it directly into the library to get access whenever you need it with the “Insert sound system” option.

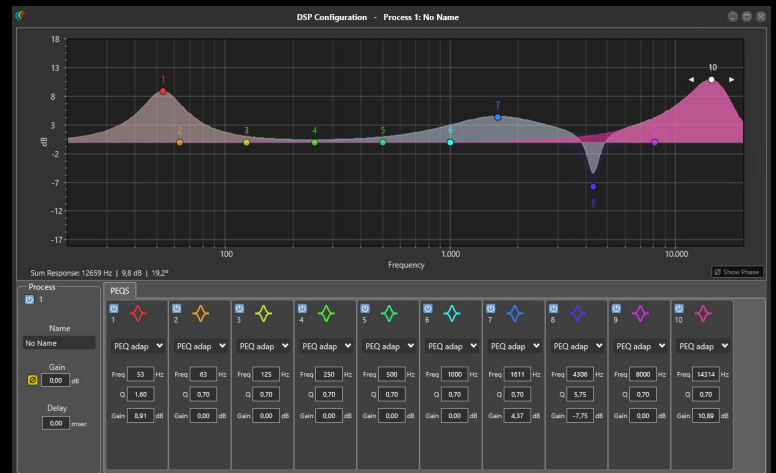
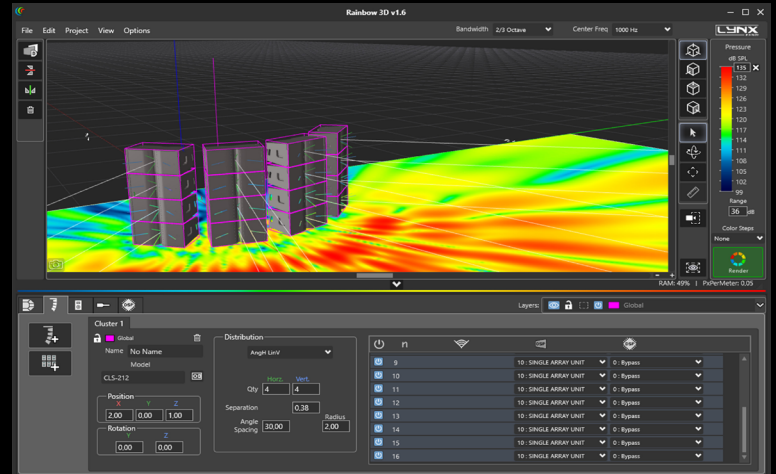
When you create a Sound System, you can add a name, a description and you have the chance to upload a picture.

• Organisation by layers

To work in a more organized way you can create multiple layers, with different names and colors to distinguish them. All elements within a layer can be selected and/or moved among them. You can also lock a layer, delete it or disable the speakers for simulation.

• DSP process over sound sources

Adding DSP process to sound sources to make corrections and optimize sound, using EQ filters, delay, gain and polarity inversion. In the near future, direct communication with Lynx Pro Audio's cabinets will be available.



RAINBOW 3D

• Multiple measures and tools

Likewise, the R&D department is developing multiple measurements and analysis tools for the calculated data. For example, adding virtual microphones that show the frequency response in the points of location indicated.

Among other tools you will find a wizard to set up different line array arrangements, a tool for line array autoplay and a ruler to take measurements (meters) in the 3D scene.

A PDF report can be generated with extensive information that includes 3D views of the project as well as a list of surfaces and loudspeakers with set-up data and EQ.

• Capture, export and import of measurement curves

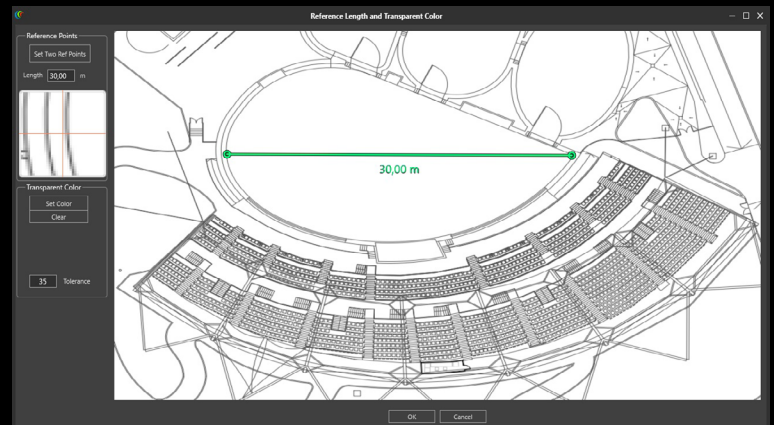
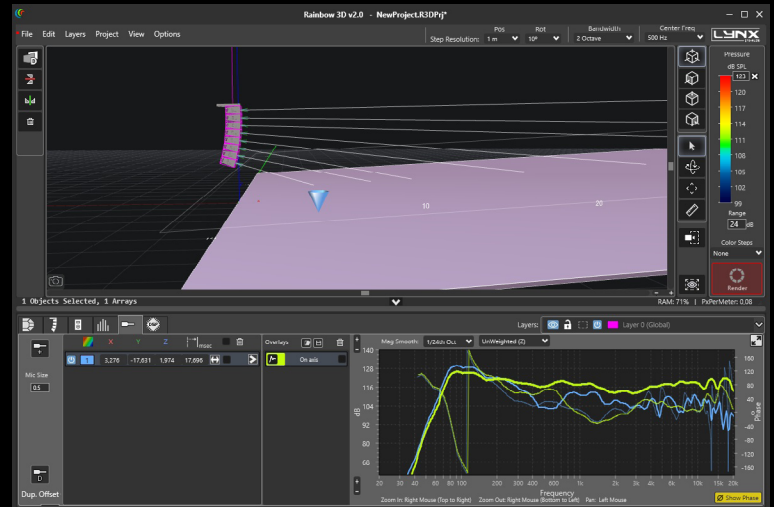
The functionality to capture, export, and import measurement curves has been added. This feature is essential for conducting precise comparative analyses, enabling users to easily evaluate different scenarios and configurations. The ability to overlay and compare multiple measurements significantly enhances the accuracy and efficiency of acoustic evaluations.

• Apply A-weighting, C-weighting to measurements

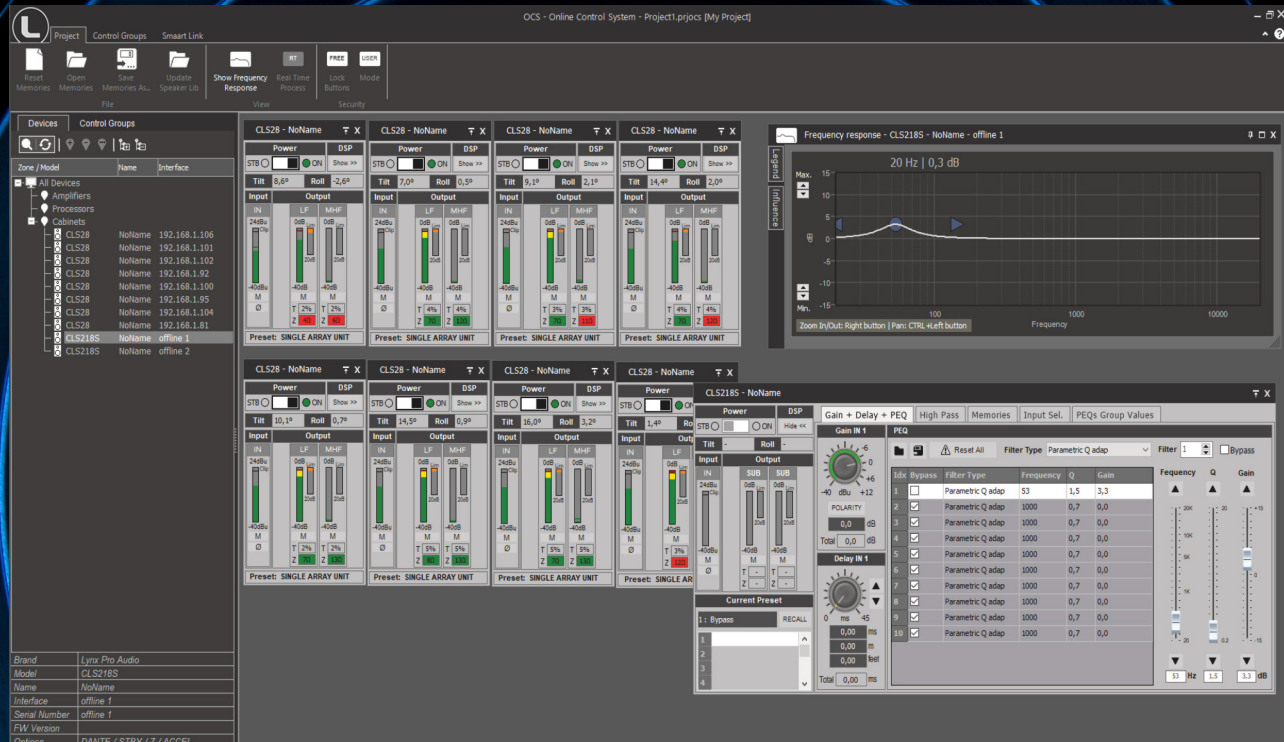
You can apply A and C weightings to measurements in your Rainbow 3D software, ensuring that the results comply with professional acoustic standards. A and C weightings are crucial for adhering to industry regulations and guidelines, allowing for a more accurate assessment of how the human ear perceives sound in different contexts.

• Insertion of images and reference measurements

Rainbow 3D allows you to insert images of your project and set reference measurements between two points on the plan image, proportionally scaling the dimensions of the area. This functionality is vital for precise calibration and system design in complex projects, ensuring that every detail is perfectly aligned and optimized. The ability to visually integrate images with measurements facilitates more coherent and efficient planning and execution of acoustic projects.



ONLINE CONTROL SYSTEM (OCS)



OCS is our control and monitoring software, working in real time for all our digital processing systems (cabinets, processors and amplifiers). It is a user interface enabling the set-up of all digital devices in an installation, allowing control via Ethernet / USB (one device).

With OCS you can configure / monitor all the parameters of Lynx Pro Audio cabinets, processors and amplifiers (input levels, cabinet angles, module temperature, compression levels, etc).

You may monitor all parameters available in our cabinets, processors and all settings in our amplifiers, from the input sensitivity to the digital process for each channel independently. You can change different parameters depending on the device.

OCS enables configuration from one single software system for all devices connected to an Ethernet network. In addition, incorporates direct communication with Smaart (R) measurement system. Through our Smaart Link we can connect to any Smaart (R) session connected to the local network. This allows us to see, in real time, the captured measurement directly in our process window.



LYNX

pro-audio

CULTURE OF SOUND



www.lynxproaudio.com