

# QB-15

COMPACT 2 WAY  
PASSIVE CABINET



## DATA SHEET

pag.1/4 V.12.01

- ▶ Ultra- compact Light weight
- ▶ Versatile Sound reinforcement
- ▶ High Performance
- ▶ 90° x 40° constant directivity rotatable horn.
- ▶ Precise band pass directivity control
- ▶ ARK optimised preset
- ▶ White & black colour optional
- ▶ Multiple rigging/mounting options



## APPLICATIONS

- Club and Bar Installs
- Live Sound
- Theatres
- Houses of Worship
- Conference
- Multi media spaces
- Portable Sound reinforcement

## GENERAL DESCRIPTION

The QB-15 is a two-way versatile, ultra-compact light weight, passive cabinet offering high-performance in a number of applications.

It features one 15" low/mid transducer with rear air ventilation and a 1" high frequency compression driver with high tech polymer diaphragm with high surface tension energy and ultra lightweight edgewound aluminium ribbon voice coil mounted on a 90° x 40° constant directivity rotatable aluminium horn delivering exceptional dispersion and low harmonic distortion.

With a wide range of rigging accessories the QB-15 can be used and easily mounted in a variety of applications. A top hat fitting is included as standard for pole mounting with a sub-bass cabinet.

It is made from premium birch plywood and coated with high resistant water-based black paint.

For low-frequency reinforcement we recommend the QB-15 be combined with the SB-215, DR-N18 or the DR-N218.

## SPECIFICATIONS

COMPONENTS	LF 1 x 15" transducer (75 mm voice coil) HF 1 x 1" driver (44,4 mm voice coil)
------------	---

FREQUENCY RANGE	48 Hz - 20 KHz
FREQUENCY RESPONSE	58 Hz - 18 KHz
SENSIVITY 1w @ 1m	105 dB
MAX SPL 1w@ 1m	132 dB
RATED POWER RMS	500 W
PROGRAM POWER	1000 W
COVERAGE	90° x 40° rotatable
NOMINAL IMPEDANCE	8 Ohms
CONNECTORS	2 x Neutrik Speakon NL4MP
CONSTRUCTION	15 mm Premium Birch plywood
FINISH	High resistant water-based black paint Black steel grill with acoustical fabric protection
FITTINGS	4 x Rear M6 for WB-02 2 x Top M6 for eyebolt and horizontal bracket HBR-15 2 x Bottom M6 for eyebolt and horizontal bracket HBR-15 1 x Rear M6 for eyebolt 2 x Left M6 for vertical bracket VBR-15 2 x Right M6 for vertical bracket VBR-15 1 x Bottom Top Hat

DIMENSIONS (H x W x D)	663 x 438,2 x 375,3 mm.
WEIGHT	25 Kg

#### PREDICTION SOFTWARE



- RAINBOW

Acoustical Prediction software for accurate loudspeaker planning offering both horizontal and vertical views.

#### ARK OPTIMISED PRESET

QB-15.equ

Compatible with all ARK and DAC versions

#### ACCESSORIES



WB-02



AGR-6



VSM-01



TV-50



TU-C01  
&  
TU-C02



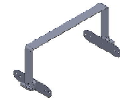
SB-02



TV-35



VBR-15

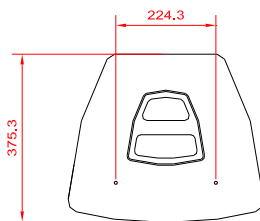
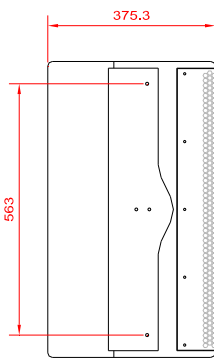
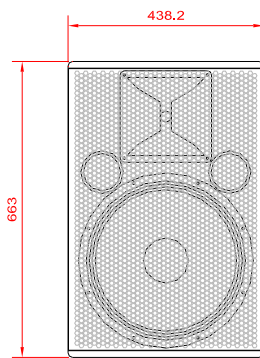
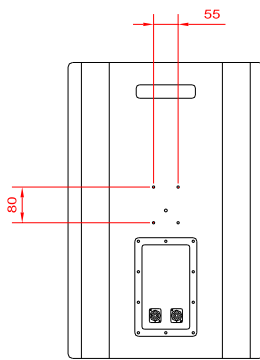


HBR-15

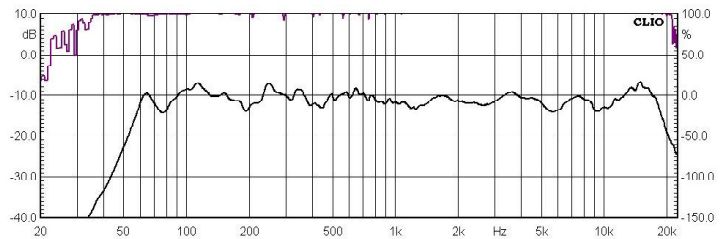


WB-03

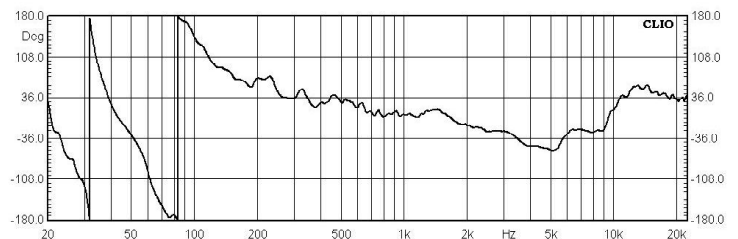
#### DIMENSIONS



#### FREQUENCY RESPONSE



#### PHASE



#### IMPEDANCE

