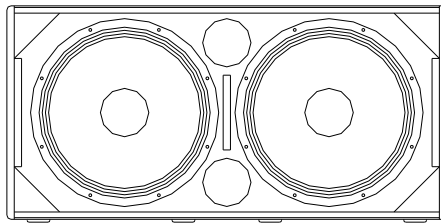


LX-318C

USER MANUAL

V.13.10



Lynx Pro Audio S.L.

Valencia, Spain - www.lynxproaudio.com - info@lynxproaudio.com

LX-318C powered cabinet



Manufacturer



**LYNX Pro Audio S.L.
Calle 7 - Pol. Ind. Picassent
E-46220 Picassent (Valencia)**



**CB SCHEME, IEC SYSTEM FOR CONFORMITY TESTING AND CERTIFICATION
OF ELECTRICAL EQUIPMENT**



CE CERTIFICATION, EUROPEAN PRODUCT



RoHS Directive 2002/95/EC

CONTENTS

- SAFETY PRECAUTIONS

- **CABINET INTRO**

SPECIFICATIONS	5
BACK PANEL	6
CONNECTORS AND CONNECTIONS	6

- **CONFIGURING THE CABINET DSP OPTIONS**

PRESET LIST	8
CONFIGURATION PANEL	9
SELECT INPUT DIGITAL / ANALOG	9
SELECT AND RUN PRESETS	10
CARDIOID OR OMNIDIRECTIONAL USE	11
ONLINE CONTROL SYSTEM	12
ETHERNET CONFIGURATION	13

- **SOFTWARE, RAINBOW** 19

- ACCESSORIES 21

- GUARANTEE 22

Before starting to use this device, please read this instruction manual carefully.
Keep these instructions in the place where the equipment will be used and with easy access to them.

- Electrical appliance.



The exclamation mark within a triangle identifies the presence of electricity. Use the system carefully without wet hands or feet. Avoid installing the speaker in wet or excessively humid places. Regularly check the condition of the cables and make sure these are not being walked on or pinched. Connect the speaker to bipolar, earthed mains. The mains plug must be connected to the appropriate protection (fuse or breaker). Connection to any other type of mains could result in an electrical shock and violate local electrical codes. **DO NOT CONNECT OR DISCONNECT THE AC POWER CONNECTORS UNDER LOAD.**

- Heavy equipment.



Apply back protection when using the system. Avoid loading and unloading at heights.

- Electrical shock risk.



The diagonal mark within a triangle identifies the presence of dangerous voltage. Do not open or handle the interior of the box. These parts are not to be adjusted by the user. For maintenance and/or repair please go to an authorized service centre. In order to reduce the risk of electric shock, disconnect from AC before plug in or unplugging Audio signal cables. Reconnect to AC only if all signal connections are made and secured. Never manipulate the ground type plug provided. The AC mains plugs should always remain accessible for operation. Unplug the loudspeaker during storms or when it's being used for a long time.

- Hearing damage risk.



These systems can reproduce large quantities of sound pressure which can damage hearing. Take precautions if you are going to be near them for extended amounts of time and do not get too close.

- Hanging – Flying.



Do not hang the cabinets from the handles or from any other part other than the designated hanging point. When flying this system please observe the technical and “Rainbow” software data carefully. Never exceed the maximum safe working loads or ignore the instructions included within this manual. Use Only flying accessories provided by Lynx Pro Audio S.L. Rigging must be always carried out by professionals.

- Delicate Material.



Please ensure no foreign object or water enters the speaker. Do not place material that contains liquid on or near the unit. Only clean the unit with dry cloths. Do not use solvents.

-Overheating – Fire risk.



To reduce the risk of the speaker over heating, avoid direct contact with sunlight. Avoid placing the unit close to heat inducing objects such as radiators. Do not cover the equipment in use and do not block any ventilation openings. Do not put naked flame, such as lighted candles, close or on top of the unit.

- Electromagnetic and interferente emissions.



Avoid placing objects which through electromagnetic waves can damage the unit, such as mobile phones, lap tops, magnetic strip cards etc.

This system complies with normatives

EN 55103-1 (1)

EN 55103-2 (2)

(1) This device may not cause harmful interferences.

(2) This device may receive interference including interferences that may cause undesired working.

-IMPORTANT NOTE.



This Equipment must be used in accordance with these instructions and by trained professional personnel only. This equipment should not be used in places with extreme tropical climates. Don't expose this apparatus to extreme humidity and or temperature values.

INTRODUCTION

To facilitate, correct and reliable use of the Lynx LX-318C we have designed this instruction manual. Please read the manual carefully before proceeding to install the system.

When flying this system please observe the technical and "Rainbow" software data carefully. Never exceed the maximum safe working loads or ignore the instructions included within this manual.

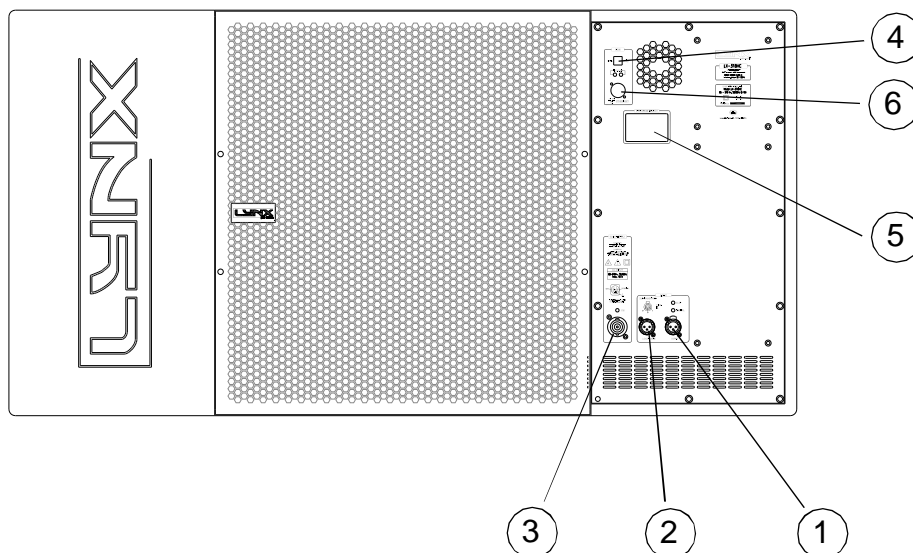
SPECIFICATIONS:

FREQUENCY RANGE	Cardioid: 30Hz -100Hz Omni: 30Hz -160Hz
FREQUENCY RESPONSE	Cardioid: 32Hz -95Hz Omni: 32Hz -140Hz
MAX SPL	138dB/ 141dB peak
TRANSDUCERS	Front: 2 x 18" (135mm voice coil 5", 4 ohms) Rear: 1 x 18" (135mm voice coil 5", 4 ohms)
SHAPE	Bass reflex system, direct radiation
POWER AMPLIFIER	4200W Class D with Switching Power supply power factor correction PFC technology Front: 2 x 1400W Rear: 1 x 1400W
DSP	Internal LYNX digital processor DSPB-22®
CABINET ADJUSTMENT	Back panel LCD screen
INTERNAL CONTROLS	Temperature sensor / Fan Speed
SIGNAL CONNECTION	NEUTRIK connectors XLR Male Input XLR Female Loop Thru
CONTROL CONECTIONS	USB (DSP programming), ETHERNET* (Online Control System OCS®)
AC POWER	85v-270v , 50/60 Hz with PFC
AC CONECTIONS	32A NEUTRIK POWERCON NAC3FC-HC
CONSTRUCTION	18 mm Premium birch plywood
FINISH	High resistant water-based black paint
FRONT DESIGN	Antirush black steel grille
DIMENSIONS (H x W x D)	532 x 1086 x 838 mm 532 x 1146 x 838 mm with ball pins
WEIGHT	112 Kg (245 lbs)
RIGGING	Integrated flying plates OPTIONAL

* Ethernet connection is optional

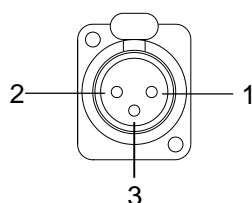
LX-318C BACK PANEL.-

- 1.- SIGNAL INPUT.
- 2.- SIGNAL LINK.
- 3.- INPUT AC.
- 4.- USB.
- 5.- DSP CONTROL.
- 6.- ETHERNET (optional)

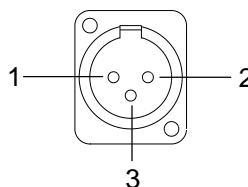


CONNECTORS AND CONNECTIONS

XLR SOCKET CONNECTORS

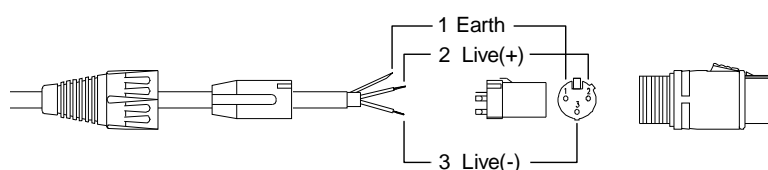
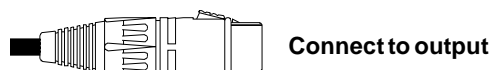
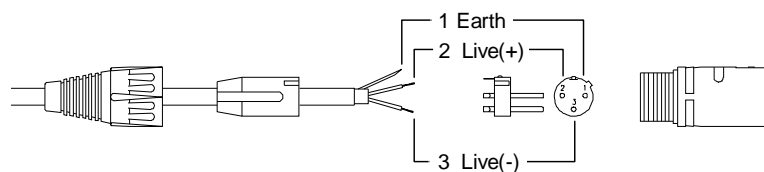


INPUTS
1.- EARTH
2.- LIVE (+)
3.- LIVE (-)



OUTPUTS
1.- EARTH
2.- LIVE (+)
3.- LIVE (-)

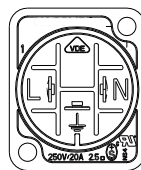
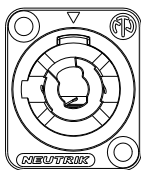
XLR AERIAL CONNECTORS



SOCKET POWERCON CONNECTORS



CAUTION: Do not connect or disconnect the AC Power connectors under load.

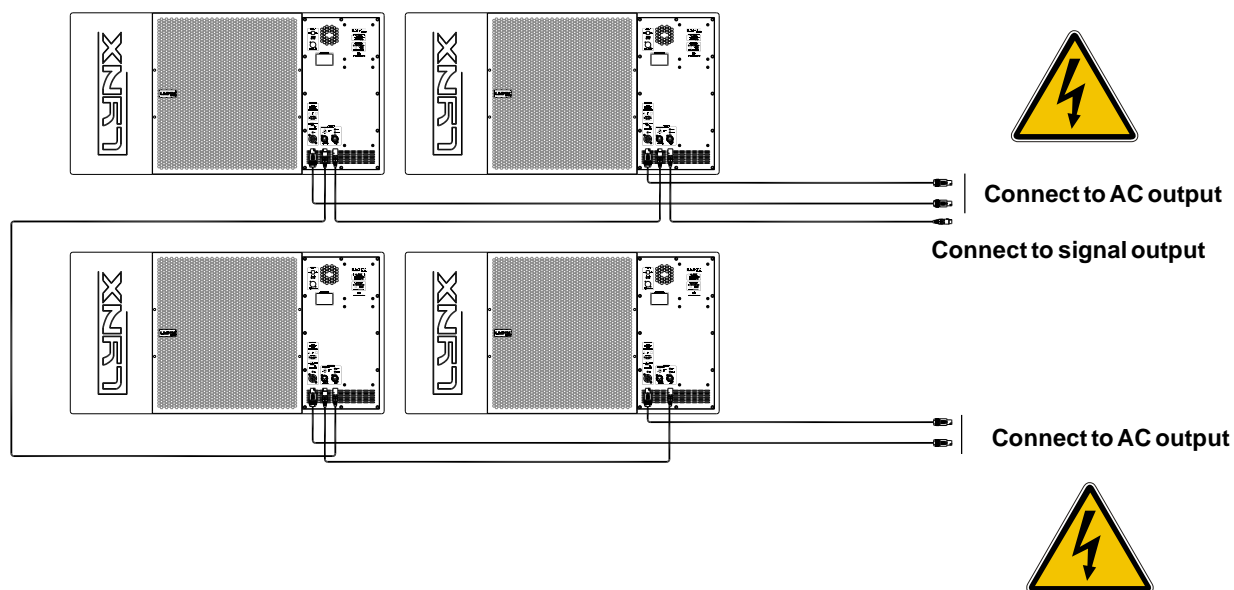


L - Line

N - Neutral

⏏ - Earth

CONNECTION EXAMPLE: 4 LX-318C CABINETS



CONFIGURING THE CABINET DSP OPTIONS

From the buttons below the display on the cabinet's back panel you can configure the Basic adjustment functions of the internal DSP. You will find the following configurations:

Preset	Display Name	Additional info
01	CARDIOID	Cardioid configuration
02	CARD X100Hz	Cardioid 100 Hz low pass filter
03	CARD X90Hz	Cardioid 90 Hz low pass filter
04	CARD X80Hz	Cardioid 80 Hz low pass filter
05	CARDIOID	Cardioid configuration -6dB
06	X100 Hz -6dB	100 Hz low pass filter -6dB
07	X90 Hz -6dB	90 Hz low pass filter -6dB
08	X80 Hz -6dB	80 Hz low pass filter -6dB
09	CARDIOID INV	Cardioid configuration INVERTED
10	CARD X100 INV	Cardioid 100 Hz low pass filter INVERTED
11	CARD X90 INV	Cardioid 90 Hz low pass filter INVERTED
12	CARD X80 INV	Cardioid 80 Hz low pass filter INVERTED
13	CARD -6 INV	CARDIOID -6dB INVERTED
14	X100Hz -6 INV	100 Hz low pass filter -6dB INVERTED
15	X90Hz -6 INV	90 Hz low pass filter -6dB INVERTED
16	X80Hz -6 INV	80 Hz low pass filter -6dB INVERTED
17	CARDIOID	Cardioid configuration
18	CARDIOID	Cardioid configuration
19	CARDIOID	Cardioid configuration
20	OMNI	Omnidirectional configuration

Note:

You must apply the desired configuration in each one cabinet. This is done via the buttons located on the back panel of the cabinet and requires electrical power to work.

CONFIGURING THE CABINETS DSP OPTIONS

From the buttons below the display on the Lynx cabinet's back panel you are able to configure the Basic adjustment functions of the internal DSP.

Note:

You must apply the desired configuration in each cabinet. This is done via the buttons located on the back panel of the cabinet and requires electrical power to work.

CONFIGURATION PANEL

On the back panel you will see 3 buttons and an information screen, on which you can read the established parameters and information such as digital or analog input, amplification module temperature, input signal level and name of the current preset (Fig1). If changes are not made the display will automatically dim to save energy and avoid unnecessary light in situations where light is not wanted. To re-activate the light simply press the OK button.

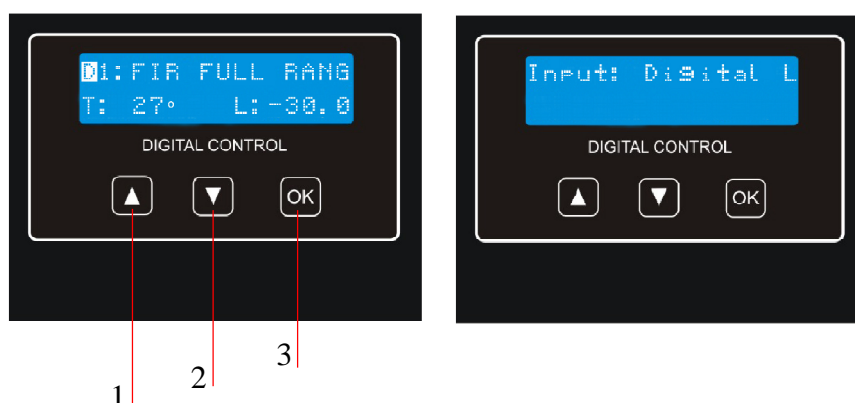


Fig 1

SELECT THE INPUT: DIGITAL OR ANALOG

There are four input options: Analog / Digital L / Digital R / Digital L+R

To select the input mode just press the OK button (3) and the up button (1), both at the same time but pressing the OK button first. Then you can select one of the four options using the up button (1). To confirm your selection press OK (3) until the progress bar finishes. The display will show an inverted D (digital) or an inverted A (Analog) so you can always know if the input is digital or analog.



SELECT AND RUN PRESETS

To change the preset configuration just press the up button (1) and down button (2) until you see the title and preset number required (Fig2). Once found, press OK (3) until the progress bar finishes (Fig3). The display will indicate "Loading DSP" (Fig4)

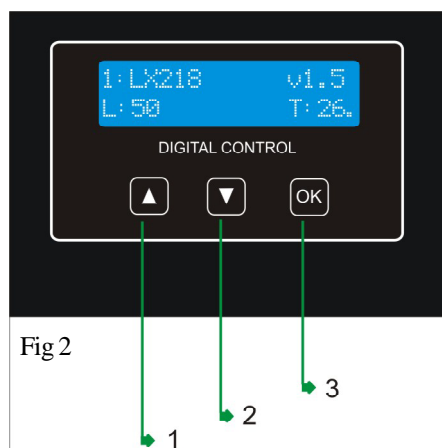


Fig 2



Fig 3

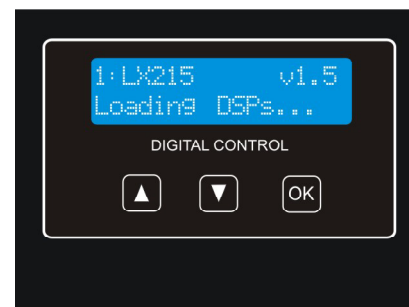


Fig 4

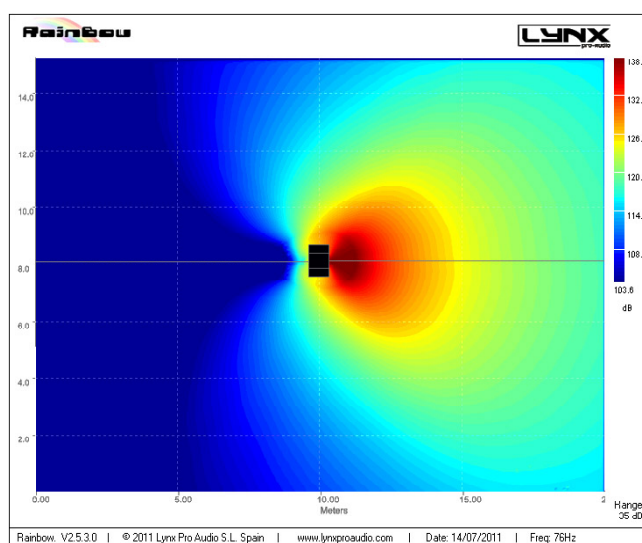
Note:

In case of a power cut, the DSP will save its last configuration when restarted.

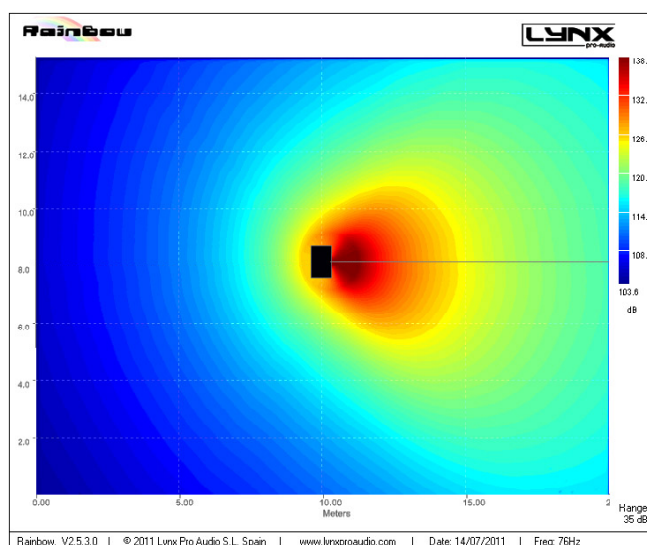
CARDIODE OR OMNIDIRECTIONAL USE

The LX-318C cabinet is not a conventional cardioid but a '2 in 1'. Because of our sophisticated integrated processor the user can select between omnidirectional or cardioid coverage, activating the rear speaker as well as selecting the rear frequency they most want to cancel, increasing the front pressure and directivity and ensuring that rear sound does not spill on to the stage behind the sub-bass.

This selection is done from the buttons below the LCD on the cabinets back panel. Just preset up or down until you see the preset required.



The LX-318HC with cardioid coverage configuration



The LX-318C with a normal omnidirectional configuration

ONLINE CONTROL SYSTEM

Who is it for?

Users of Self powered DSP incorporated Lynx Pro Audio Cabinets where the user has requested the cabinets be supplied with the Ethernet Module kit.

What is it for?

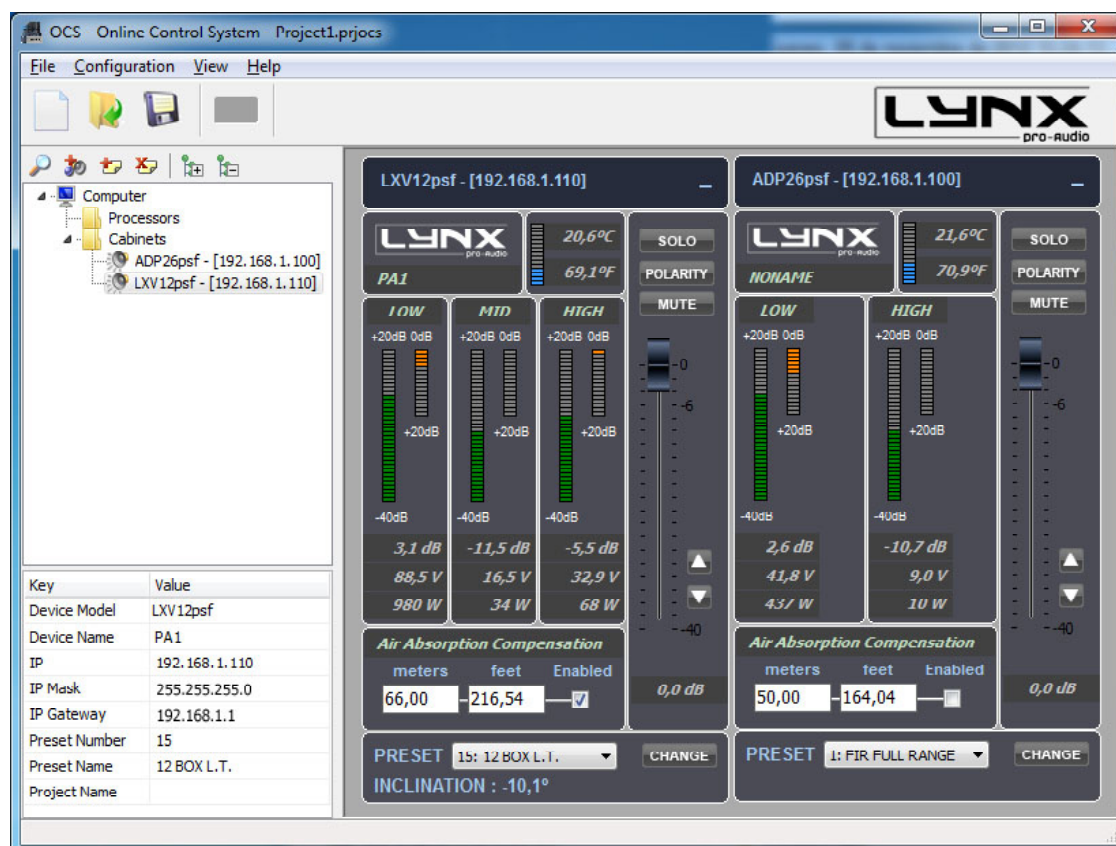
Obtain detailed information of cabinet behaviour and monitor the cabinet/s in real time. You can change the preset, gain, mute, polarity and phase. You can also activate the air absorption compensation and select the «SOLO» mode.

How does it work?

Via Ethernet (cable or wireless). Once installed, the O.C.S. software automatically detects all the cabinets connected to the network and displays them in the O.C.S. window on the users PC.

What does it show?

As well as displaying the cabinet model and IP address the O.C.S will be monitoring in real time and the user will be able to view RMS levels, Input clip, power module temperature, compression levels, air absorption compensation and cabinet angulation.



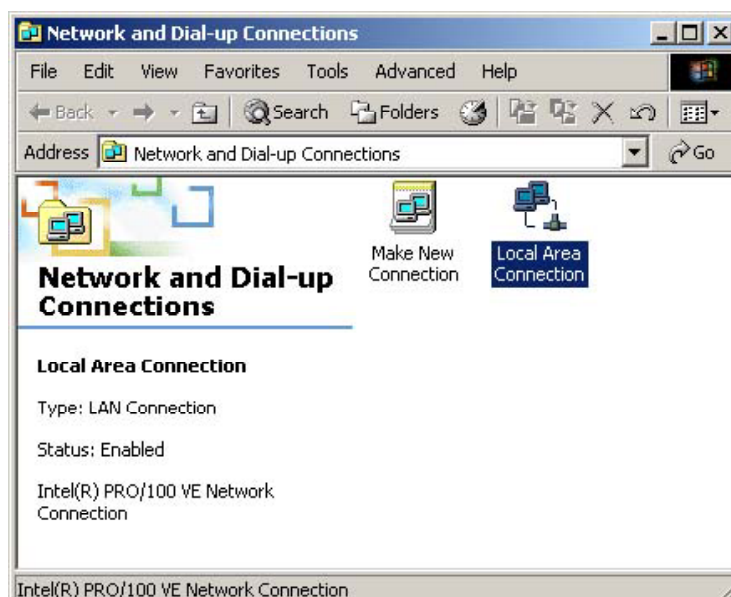
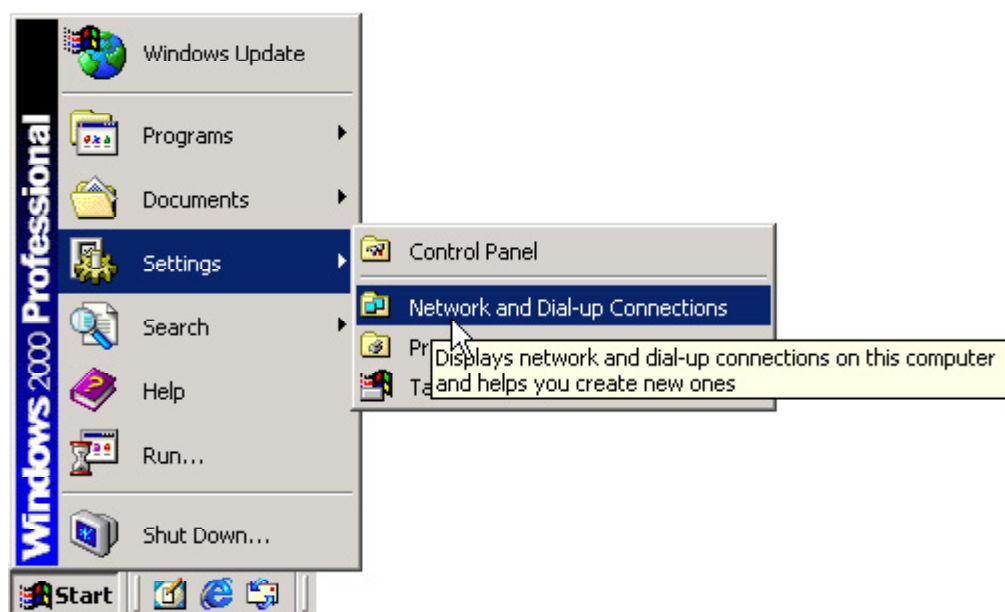
CONFIGURING ETHERNET TO WORK WITH LX-318C

There are two possible ways to connect:

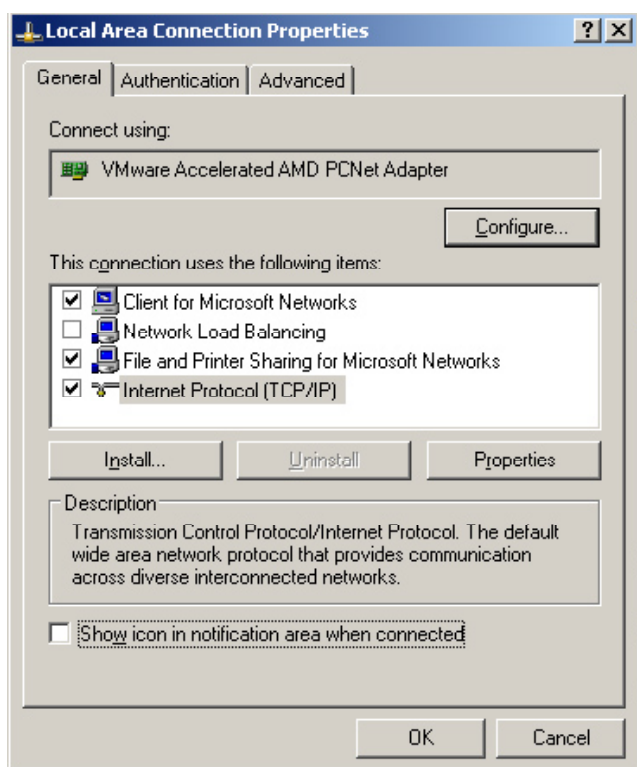
- 1.- Connecting through an ETHERNET SWITCH/HUB::
 - You will need a normal CAT5 Cable.
- 2.- Connecting through a Wireless ETHERNET.

Let us now proceed to configure the Ethernet network, setting the IP address of the computer as static.
To do this go to:

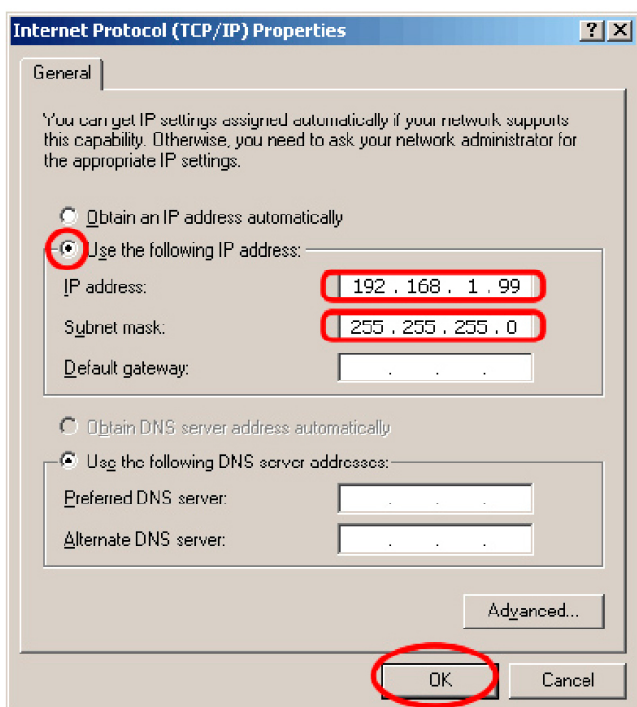
START > CONFIGURATION > NETWORK CONFIGURATION



We will launch the properties of "Local Area Connection" by clicking the right mouse button and clicking on properties.



Select "Internet Protocol (TCP / IP)" and click on properties.



Select: "Use next IP Address" And write as you wish, in order to configure your network.

Normally, Ip values will be something like this:

IP Address: 192.168.1.xxx
Subnet Mask: 255.255.255.0

Where xxx will be a number between 1 and 254

Accept to quit the network settings and again to apply them at the next screen. Depending on the Windows Version, you will be asked to reboot or not.

Once the Computer is configured with a static IP proceed to connect to the line array system through the OCS (online control system) software.

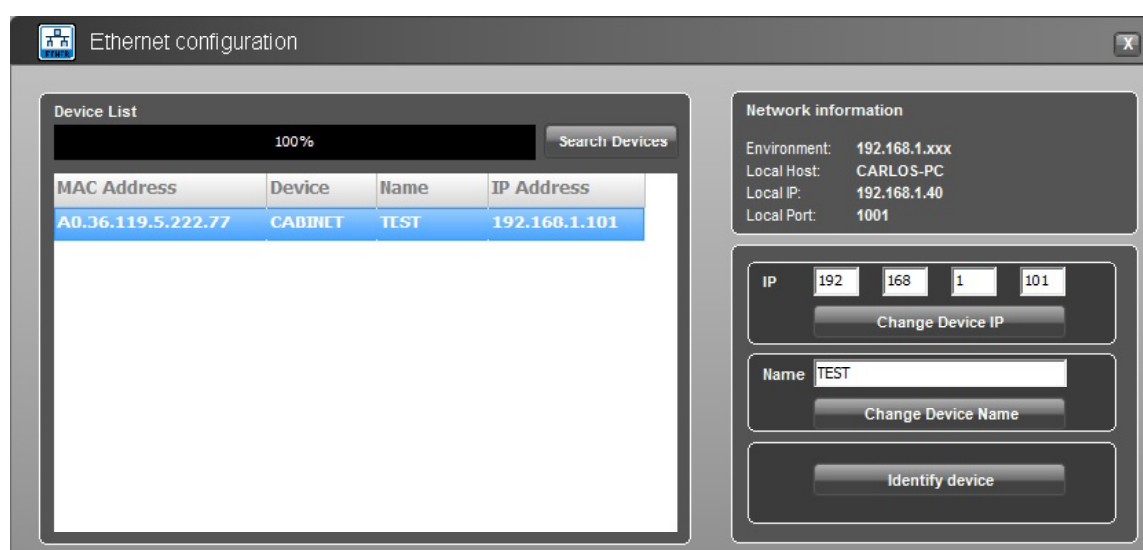
Open the OCS software and from the Initial Screen choose Ethernet device into the configuration menu..

It will open a different screen, as follows, there you can see your Network configuration, and the cabinets currently connected.



If you want to change the IP select the cabinet and modify the assigned IP in order to be able to connect to it.

By default, the Cabinet will have this IP 192.168.1.100



The Network environment consists in the first 3 sets of three numbers separated by dots. In order to detect/communicate with the cabinets, the software and the cabinets **must have the same Network settings**.

If it is not in the same environment Windows Profesional (2000, XP, VISTA, Windows 7 and 8) will detect it, but is not going to be able to establish connection. In Windows Home, the processor is not going to be detected until the same environment is applied.

In order to **change the IP** settings to have the same configuration as the PC, we can change the IP address of the cabinets by clicking in the *Assign IP to select Device* button after writing in the box above the desired data. Remember there cannot be two devices with exactly the same IP address, the last set of three numbers has to be different and unique to each one of the devices.

for example, write 192.168.1.100 and click "**Change Device IP**" button.

The OCS software will send the new IP to the cabinet and it will scan the network again showing the same information as before, plus more information such as Pc name, IP address and Port in which the communication is established.

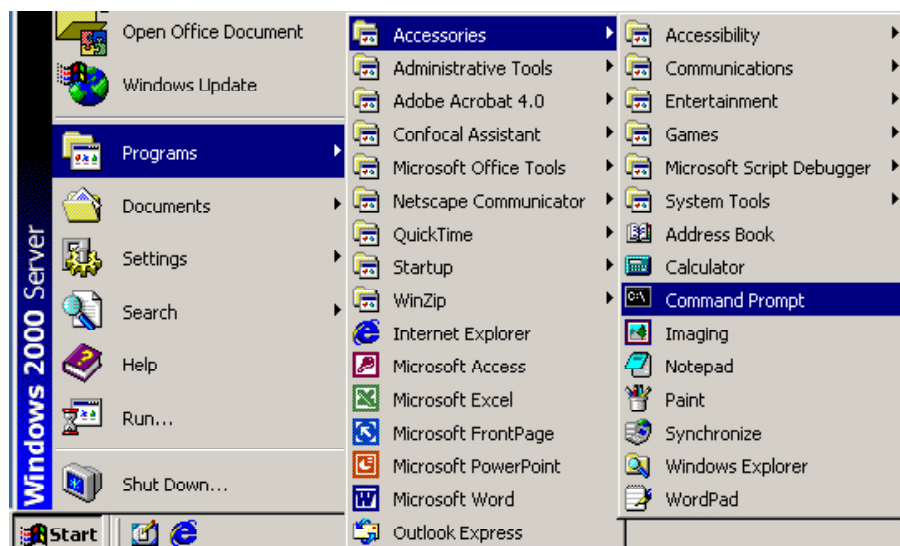
When we have a lot of cabinets connected in the network we can use the button "**Identify Device**" to see which box is selected (two activity LEDS will blink for one second). With that information then we can "**Change device NAME**" assigned to this Cabinet by clicking in the "**Change device name**" button after writing in the box above the desired Name.

Returning to the main screen, we can see each cabinet showing: Model, IP address and Name, as well as monitoring: RMS levels, Input clip, power module temperature, compression levels, air absorption compensation and cabinet angulation, as well as displaying the cabinet model and IP address.



If you need to know the PC Network settings go to:

START > ALL PROGRAMS > ACCESSORIES > Command Prompt



It will open the cmd.exe from where you can type the IPCONFIG command (ipconfig + Enter), which will show your actual IP settings.

```
C:\WINDOWS\system32\cmd.exe
Microsoft Windows XP [Version 5.1.2600]
(C) Copyright 1985-2001 Microsoft Corp.

C:\Documents and Settings\HP_Administrator>ipconfig

Windows IP Configuration

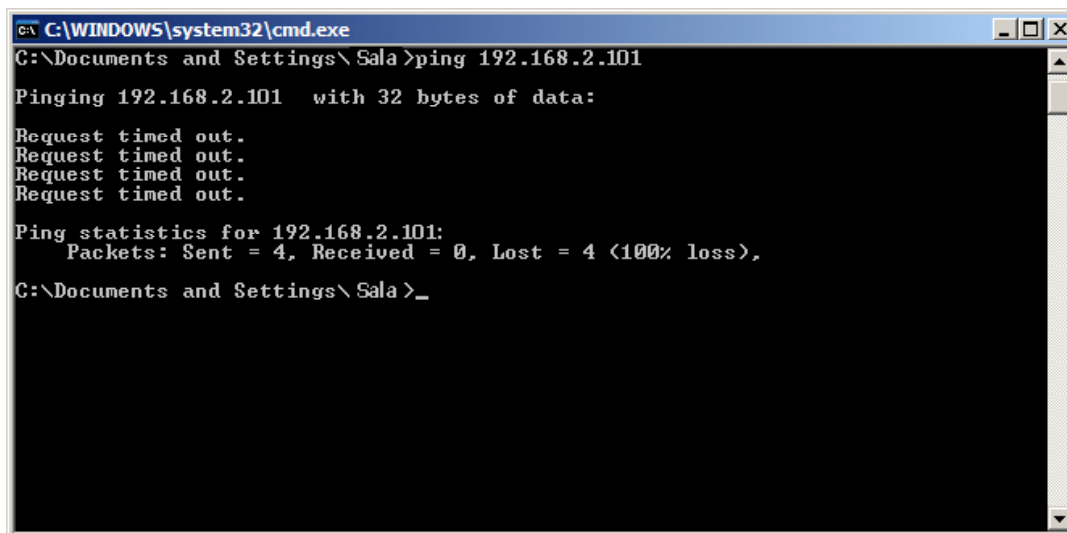
Ethernet adapter Local Area Connection:

    Connection-specific DNS Suffix  . : 
    IP Address . . . . . : 192.168.2.99
    Subnet Mask . . . . . : 255.255.255.0
    Default Gateway . . . . . : 

C:\Documents and Settings\HP_Administrator>
```

Here we can see that this PC has IP set as 192.168.2.99.

You can also use the command prompt to know if an IP is already in use by another device. In this case type "ping IP" (ping 192.168.2.xxx) and press enter. If there is no device with this IP you will see the following information:



```
C:\WINDOWS\system32\cmd.exe
C:\Documents and Settings\Sala>ping 192.168.2.101

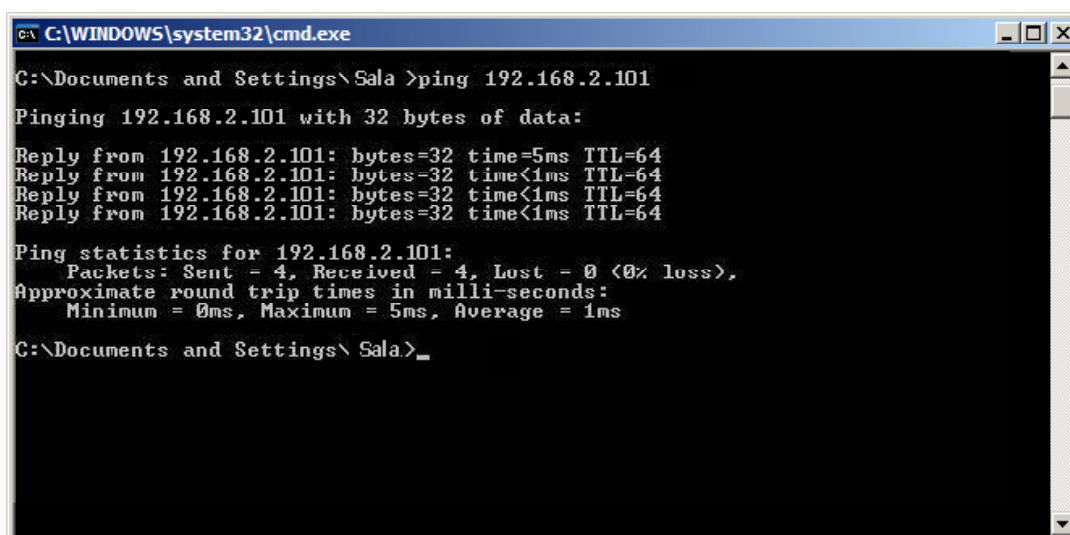
Pinging 192.168.2.101 with 32 bytes of data:

Request timed out.
Request timed out.
Request timed out.
Request timed out.

Ping statistics for 192.168.2.101:
    Packets: Sent = 4, Received = 0, Lost = 4 (100% loss),

C:\Documents and Settings\Sala>_
```

If the IP is in use, the device will respond to the Ping, and we will obtain this information:



```
C:\WINDOWS\system32\cmd.exe
C:\Documents and Settings\Sala>ping 192.168.2.101

Pinging 192.168.2.101 with 32 bytes of data:

Reply from 192.168.2.101: bytes=32 time=5ms TTL=64
Reply from 192.168.2.101: bytes=32 time<1ms TTL=64
Reply from 192.168.2.101: bytes=32 time<1ms TTL=64
Reply from 192.168.2.101: bytes=32 time<1ms TTL=64

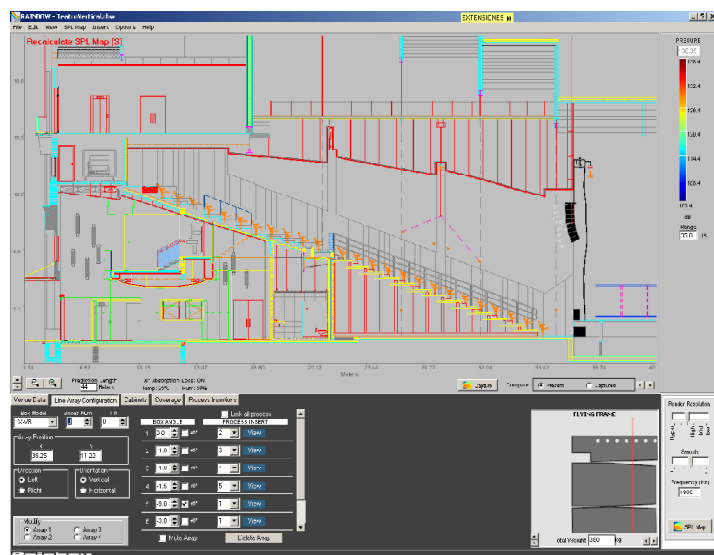
Ping statistics for 192.168.2.101:
    Packets: Sent = 4, Received = 4, Lost = 0 (0% loss),
    Approximate round trip times in milli-seconds:
        Minimum = 0ms, Maximum = 5ms, Average = 1ms

C:\Documents and Settings\Sala>_
```

You now have the Cabinets working in the ETHERNET Network Enviroment.

RAINBOW – ACOUSTICAL PREDICTION SOFTWARE

Thanks to the RAINBOW software, you will be able to “virtually” determine the acoustical response of one or various cabinets at the same time.



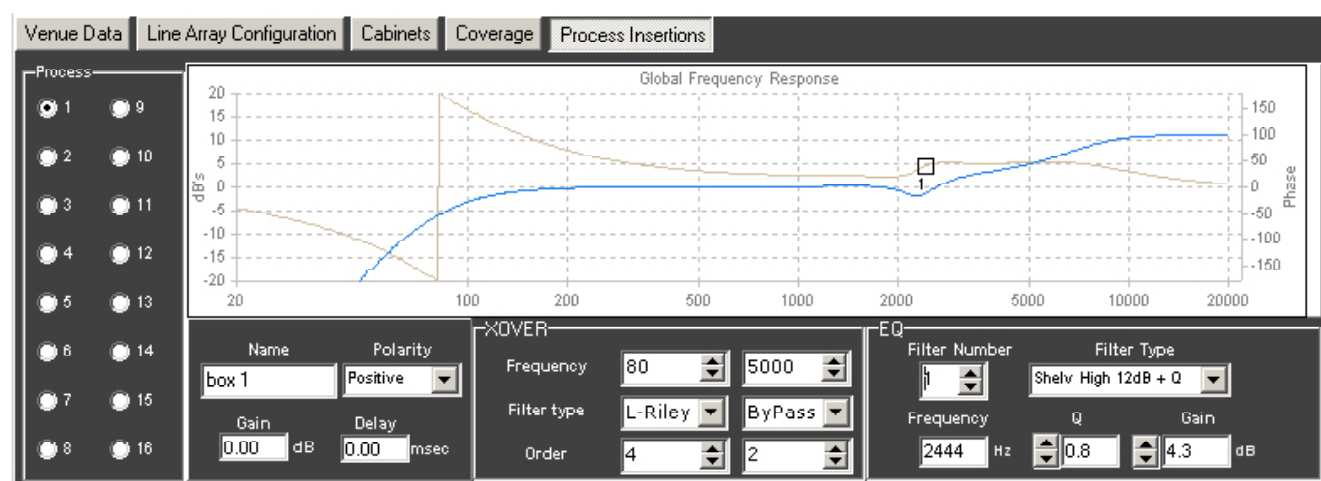
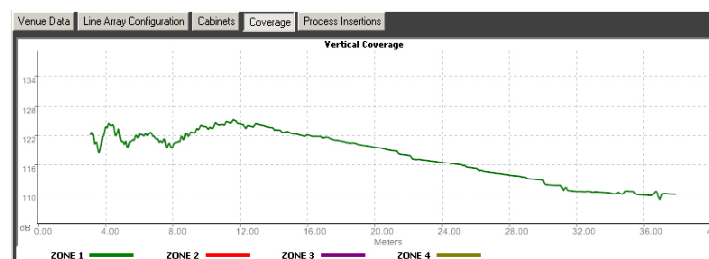
Based on polar response measurements, taken meticulously with a 360° coverage both vertically and horizontally, the Rainbow software is able to calculate the SPL response including the interaction between them taking into account the magnitude and phase response, in order to enable the user to correct cancellations and even to create them if the acoustical design so requires.

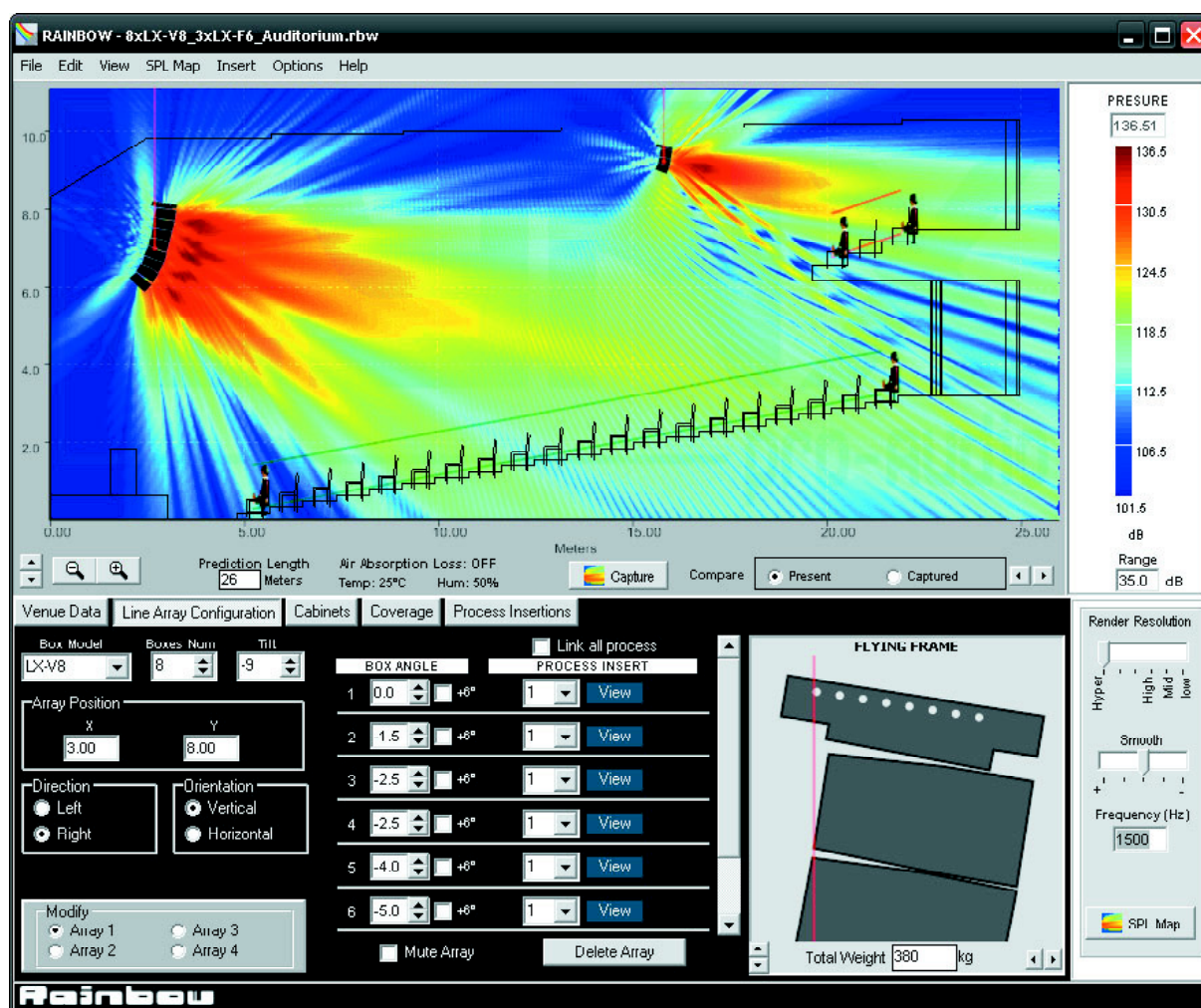
Rainbow is very easy to use and offers a very intuitive design, multitool interface and on-line updatable data base.

The Rainbow software has been designed by and for sound technicians. Its aim is to help installers and users of Lynx pro audio products.

This software is able to import WMF Vector Files with technical drawings and insert them directly into the prediction window and thus enabling real measurement predictions.

This also helps to determine dead zones and obtain the maximum performance from each of the cabinets installed.





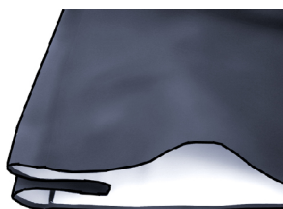
Features

The RAINBOW acoustical prediction software allows among other things:

- Prediction up to 4 LINE ARRAYS of 24 cabinets each simultaneously, together with multiple points with cabinets
- Flying points information according to the inclination of the cabinets
- Weight calculation of the different systems
- Sub-bass simulation (for instance to achieve cardioid configurations)
- Orientation of cabinets (Horizontal/vertical)
- Throw Direction of cabinets (right/ left)
- Individual delay per cabinet/system
- Polarity selection for each cabinet
- Up to 40 process insertions with Equalization and CrossOver assignable per cabinet.
- Simulation of the Air absorption sound loss with the distance
- SPL Pressure information
- Distance measurement
- Import of CAD files
- Up to 4 audience or hearing zones
- Coverage curves on the hearing zones.
- Export of SPL Map and coverage curves on jpg or bmp format
- Print project report (SPL prediction, flying points, weights, cabinet inclination, polarities, process applied, EQ Curves...)

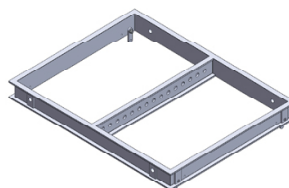
ACCESSORIES

The LX-318C sub unit has at its disposal some practical accessories to help use the system.



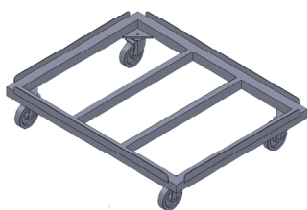
FD-2LX318C
FD-3LX318C

Nylon protection cover for
either 2 or 3 cabinets



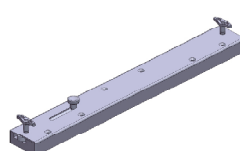
SV-LX318C

Flying frame for the
LX-318C.



CA-LX318C

Transport dolly for up to 3
LX-318C



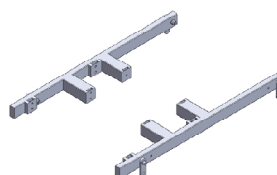
KV-318C

4 piece adaptor for kit for
flying LX-318C.



FD-LX318CNL

Rain cover for the back
pannel



ST-LX318CV

Connection system to
link LX-V12 or LX-V8 with
sub units LX-318C.

LYNX PRO AUDIO GUARANTEE

Lynx products are guaranteed against every kind of manufacturing fault 2 year after the date of sale. When products are under guarantee, the repairing and the free supplying of the device parts in order to correct any kind of defect are guaranteed by Lynx Pro Audio S.L. In the case that the product could not be returned to the factory for checking and repairing, Lynx Pro Audio S.L. would supply all the necessary parts.

Lynx Pro Audio S.L. is not responsible for any damage or defect caused during the transport or caused by an undue or improper handling y a non-authorized person during the life of this guarantee.

All our products undergo rigorous tests and quality controls. We guarantee the characteristics described here within and their quality against any fabrication defect.

The user loses all warranty rights if he incorporates or carries out any modification to the product, if he uses it outside of the stated safe working loads or does not secure the system properly using all the pins in their corresponding holes.

For any question regarding the product, the user must quote the model and serial number.



DECLARATION OF CONFORMITY

LYNX Pro Audio S.L.
Calle 7 - Pol. Ind. Picassent
E-46220 Picassent (Valencia)

Lynx Pro Audio S.L. declares that LX-318C cabinets are in conformity with the following EC directives:

Low Voltage Directive	2006/95/EC
Electromagnetic Compatibility EMC	2004/108/EC
RoHS Directive	2002/95/EC

In accordance with Harmonized European Norms:

EN 60065:2002	Audio, video and similar electronic apparatus. Safety requirements
EN 55103-1:1996	Electromagnetic compatibility. Product family standard for audio, video, audiovisual and entertainment lighting control apparatus for professional use. Part 1: Emission.
EN 55103-2:1996	Electromagnetic compatibility. Product family standard for audio, video, audiovisual and entertainment lighting control apparatus for professional use. Part 2: Immunity.

WEEE Declaration: Electrical and electronic equipment must be disposed of separately from normal waste at the end of its operational lifetime. Please dispose of this product according to the respective national regulations or contractual agreements. If there are any further questions concerning the disposal of this product please contact Lynx Pro Audio S.L.

